

Mounting subplates type BA

single and modular

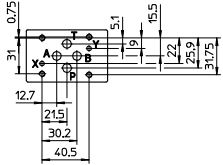
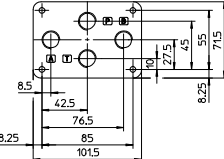
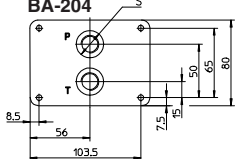
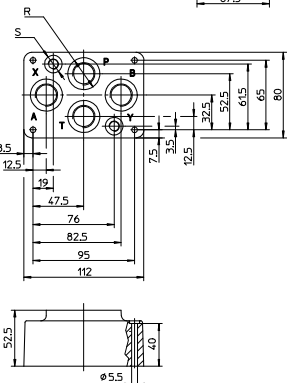
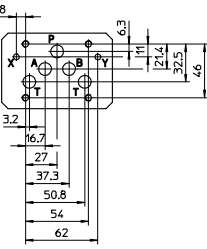
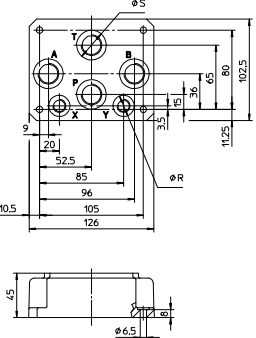
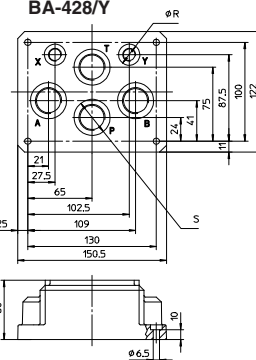
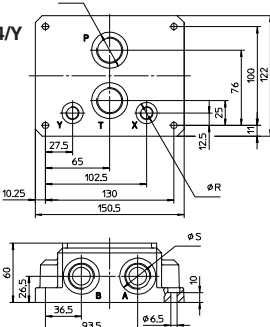
BA are single or multistation subplates with ISO mounting surface for installation of any Atos valve and they are provided with threshold ports for connectio to pressure, tank and users lines. They are characterized by low pressure drops and are grouped into two basic families with different construction criteria:

- SINGLE: for direction, flow and pressure control valves; they are available in ISO size 06, 10, 16, 20, 25 and 32;
- MODULAR: for direction control valves; they are available in ISO size 06 and 10 and are suitable for multiple assemblies of subplate mounted valves and modular elements series H (size 06) and K (size 10) connected in parallel.

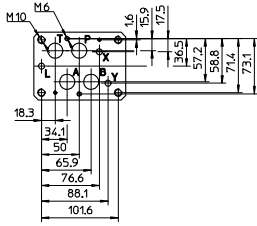
Special subplates or manifolds for customized applications are available upon request.

The set of screws for the valve installation on the BA subplate must be ordered separately.

1 SINGLE STATION SUBPLATES

<p>ISO 4401:2005 Mounting surface: 4401-03-03-0-05</p>  <p>Matching valves</p> <table border="1"> <tr><td>DH-00</td><td>SET SC-DHZ</td></tr> <tr><td>DH-01</td><td>SET SC-DHZ</td></tr> <tr><td>DH-02</td><td>SET SC-DHZ</td></tr> <tr><td>DH-04</td><td>SET SC-DHZ</td></tr> <tr><td>DH-05</td><td>SET SC-DHZ</td></tr> <tr><td>DH-08</td><td>SET SC-DHZ</td></tr> <tr><td>DH-09</td><td>SET SC-DHZ</td></tr> <tr><td>DHI</td><td>SET SC-DHZ</td></tr> <tr><td>DHE</td><td>SET SC-DHZ</td></tr> <tr><td>DHA</td><td>SET SC-DHZ</td></tr> <tr><td>DHW</td><td>SET SC-DHZ</td></tr> <tr><td>DHQ</td><td>SET SC-DHZ</td></tr> <tr><td>DLOH, DLEH</td><td>SET SC-DHZ</td></tr> <tr><td>QV-06</td><td>SET SC-QV</td></tr> <tr><td>RZMO</td><td>SET SC-DHZ</td></tr> <tr><td>RZGO</td><td>SET SC-DHZ</td></tr> <tr><td>DHZO</td><td>SET SC-DHZ</td></tr> <tr><td>DLHZO</td><td>SET SC-DHZ</td></tr> <tr><td>QVHZO-*06</td><td>SET SC-DHZ</td></tr> </table> <p>Set of screw to be ordered separately</p>	DH-00	SET SC-DHZ	DH-01	SET SC-DHZ	DH-02	SET SC-DHZ	DH-04	SET SC-DHZ	DH-05	SET SC-DHZ	DH-08	SET SC-DHZ	DH-09	SET SC-DHZ	DHI	SET SC-DHZ	DHE	SET SC-DHZ	DHA	SET SC-DHZ	DHW	SET SC-DHZ	DHQ	SET SC-DHZ	DLOH, DLEH	SET SC-DHZ	QV-06	SET SC-QV	RZMO	SET SC-DHZ	RZGO	SET SC-DHZ	DHZO	SET SC-DHZ	DLHZO	SET SC-DHZ	QVHZO-*06	SET SC-DHZ	<p>BA-202</p>  <p>BA-204</p>  <p>BA-302/Y</p> 	<p>VERSIONS</p> <p>BA-202: basic version without ports X and Y; ports P, A, B, T (3/8") on the base.</p> <p>BA-204: basic version without ports X and Y; ports P and T (3/8") on the base; ports A and B (3/8") on the side.</p> <p>BA-302: basic version without ports X and Y; ports P, A, B, T (1/2") on the base.</p> <p>BA-302/Y: version dimensionally identical to the corresponding basic version with the addition of X and Y ports (1/8") on the base (see figure on the left). The /Y version is always used for DHZO and DLHZO valves when drain from port Y is required.</p> <p>BA-***Q: versions identical to the corresponding basic versions, but supplied with ports P and T sealed. The /Q versions are used for type QV-06* valves and are supplied with 4 M5x70 fixing bolts.</p> <p>BA-***N: versions identical to the corresponding basic versions, but supplied without fixing bolts for type QVZO-*06 valves (already equipped with fixing bolts).</p> <p>X and Y ports are only present in the /Y versions.</p> <table border="1"> <thead> <tr> <th>Code</th> <th>Ports (GAS) A,B,P,T (X-Y)</th> <th>Ø Counterbore S [mm]R [mm]</th> <th>Mass [Kg]</th> </tr> </thead> <tbody> <tr> <td>BA-202</td> <td>3/8"</td> <td>-</td> <td>1,2</td> </tr> <tr> <td>BA-204</td> <td>3/8"</td> <td>25,5</td> <td>1,8</td> </tr> <tr> <td>BA-302 (Y)</td> <td>1/2" (1/8")</td> <td>30</td> <td>1,8</td> </tr> </tbody> </table>	Code	Ports (GAS) A,B,P,T (X-Y)	Ø Counterbore S [mm]R [mm]	Mass [Kg]	BA-202	3/8"	-	1,2	BA-204	3/8"	25,5	1,8	BA-302 (Y)	1/2" (1/8")	30	1,8
DH-00	SET SC-DHZ																																																							
DH-01	SET SC-DHZ																																																							
DH-02	SET SC-DHZ																																																							
DH-04	SET SC-DHZ																																																							
DH-05	SET SC-DHZ																																																							
DH-08	SET SC-DHZ																																																							
DH-09	SET SC-DHZ																																																							
DHI	SET SC-DHZ																																																							
DHE	SET SC-DHZ																																																							
DHA	SET SC-DHZ																																																							
DHW	SET SC-DHZ																																																							
DHQ	SET SC-DHZ																																																							
DLOH, DLEH	SET SC-DHZ																																																							
QV-06	SET SC-QV																																																							
RZMO	SET SC-DHZ																																																							
RZGO	SET SC-DHZ																																																							
DHZO	SET SC-DHZ																																																							
DLHZO	SET SC-DHZ																																																							
QVHZO-*06	SET SC-DHZ																																																							
Code	Ports (GAS) A,B,P,T (X-Y)	Ø Counterbore S [mm]R [mm]	Mass [Kg]																																																					
BA-202	3/8"	-	1,2																																																					
BA-204	3/8"	25,5	1,8																																																					
BA-302 (Y)	1/2" (1/8")	30	1,8																																																					
<p>ISO 4401:2005 Mounting surface: 4401-05-05-0-05</p>  <p>Matching valves</p> <table border="1"> <tr><td>DK-11</td><td>SET SC-DK/DP-1</td></tr> <tr><td>DK-12</td><td>SET SC-DK/DP-1</td></tr> <tr><td>DKE</td><td>SET SC-DK/DP-1</td></tr> <tr><td>DKQ</td><td>SET SC-DK/DP-1</td></tr> <tr><td>DKZOR</td><td>SET SC-DK/DP-1</td></tr> <tr><td>DLKZOR</td><td>SET SC-DK/DP-1</td></tr> </table> <p>Set of screw to be ordered separately</p>	DK-11	SET SC-DK/DP-1	DK-12	SET SC-DK/DP-1	DKE	SET SC-DK/DP-1	DKQ	SET SC-DK/DP-1	DKZOR	SET SC-DK/DP-1	DLKZOR	SET SC-DK/DP-1	<p>BA-308/Y</p>  <p>BA-428/Y</p>  <p>BA-434/Y</p> 	<p>VERSIONS</p> <p>BA-308: basic version without ports X and Y; ports P, A, B, T (1/2") on the base.</p> <p>BA-428: basic version without ports X and Y; ports P, A, B, T (3/4") on the base.</p> <p>BA-434: basic version without ports X and Y; ports P and T (3/4") on the base; ports A and B (3/4") on the side.</p> <p>BA-***Y: versions dimensionally analogous to the corresponding basic versions with the addition of X and Y ports (1/4") on the base (see figure on the left). The /Y versions are always used for valves type DKZOR, DLKZOR, when drainage from port Y is required.</p> <p>X and Y ports are only present in the /Y versions.</p> <table border="1"> <thead> <tr> <th>Code</th> <th>Ports (GAS) A,B,P,T (X-Y)</th> <th>Ø Counterbore S [mm]R [mm]</th> <th>Mass [Kg]</th> </tr> </thead> <tbody> <tr> <td>BA-308 (Y)</td> <td>1/2" (1/4")</td> <td>30</td> <td>2,5</td> </tr> <tr> <td>BA-428 (Y)</td> <td>3/4" (1/4")</td> <td>36,5</td> <td>5,5</td> </tr> <tr> <td>BA-434 (Y)</td> <td>3/4" (1/4")</td> <td>36,5</td> <td>8,5</td> </tr> </tbody> </table>	Code	Ports (GAS) A,B,P,T (X-Y)	Ø Counterbore S [mm]R [mm]	Mass [Kg]	BA-308 (Y)	1/2" (1/4")	30	2,5	BA-428 (Y)	3/4" (1/4")	36,5	5,5	BA-434 (Y)	3/4" (1/4")	36,5	8,5																										
DK-11	SET SC-DK/DP-1																																																							
DK-12	SET SC-DK/DP-1																																																							
DKE	SET SC-DK/DP-1																																																							
DKQ	SET SC-DK/DP-1																																																							
DKZOR	SET SC-DK/DP-1																																																							
DLKZOR	SET SC-DK/DP-1																																																							
Code	Ports (GAS) A,B,P,T (X-Y)	Ø Counterbore S [mm]R [mm]	Mass [Kg]																																																					
BA-308 (Y)	1/2" (1/4")	30	2,5																																																					
BA-428 (Y)	3/4" (1/4")	36,5	5,5																																																					
BA-434 (Y)	3/4" (1/4")	36,5	8,5																																																					

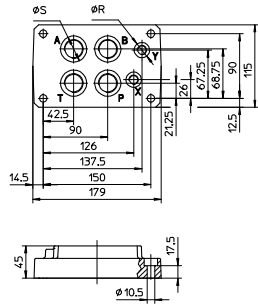
ISO 4401:2005
Mounting surface: 4401-07-07-0-05



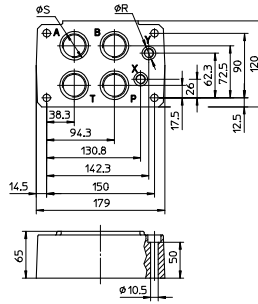
Matching valves Set of screw
to be ordered separately

DP-21	SET SC-DP2
DP-24	SET SC-DP2
DP-25	SET SC-DP2
DPH-28	SET SC-DP2
DPH-29	SET SC-DP2
DPHI-2	SET SC-DP2
DPHE-2	SET SC-DP2
DPHA-2	SET SC-DP2
DPHW-2	SET SC-DP2
DPZO-*-2	SET SC-DP2

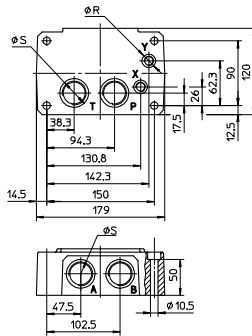
BA-418



BA-518



BA-519



VERSIONS

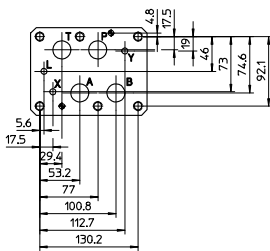
BA-418: basic version with ports P, A, B, T (3/4") and X, Y (1/4") on the base.

BA-518: basic version with ports P, A, B, T (1") and X, Y (1/4") on the base.

BA-519: basic version with ports P, T (1") and X, Y (1/4") on the base; ports A, B (1") on the side.

Code	Ports (GAS) A,B,P,T	X-Y	Ø Counterbore S [mm]	R [mm]	Mass [Kg]
BA-418	3/4"	1/4"	36,5	21,5	3,5
BA-518	1"	1/4"	46	21,5	8
BA-519	1"	1/4"	46	21,5	8

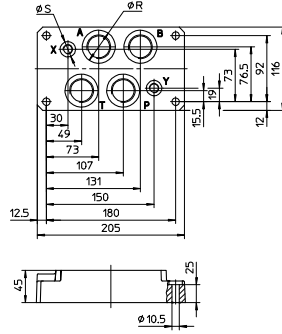
ISO 4401:2005
Mounting surface: 4401-08-08-0-05



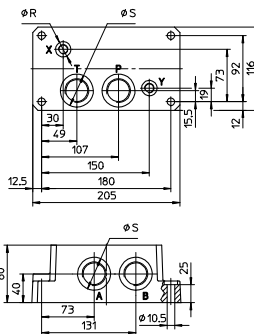
Matching valves Set of screw
to be ordered separately

DP-41	SET SC-DP4
DP-44	SET SC-DP4
DP-45	SET SC-DP4
DPH-48	SET SC-DP4
DPH-49	SET SC-DP4
DPHI-4	SET SC-DP4
DPHE-4	SET SC-DP4
DPHA-4	SET SC-DP4
DPHW-4	SET SC-DP4
DPZO-*-4	SET SC-DP4

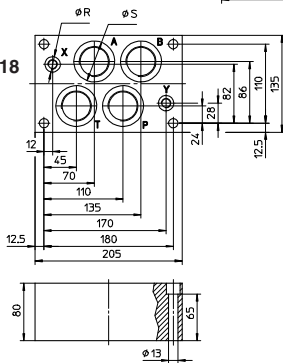
BA-508



BA-509



BA-618



VERSIONS

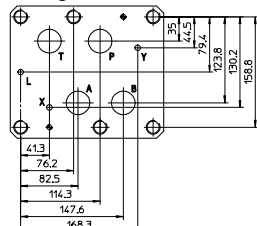
BA-508: basic version with ports P, A, B, T (1") and X, Y (1/4") on the base.

BA-509: basic version with ports P, T (1") and X, Y (1/4") on the base, ports A, B (1") on the side.

BA-618: basic version with ports P, A, B, T (1 1/4") and X, Y (1/4") on the base.

Code	Ports (GAS) A,B,P,T	X-Y	Ø Counterbore S [mm]	R [mm]	Mass [Kg]
BA-508	1"	1/4"	46	21,5	7
BA-509	1"	1/4"	46	21,5	12,5
BA-618	1 1/4"	1/4"	57	21,5	13,5

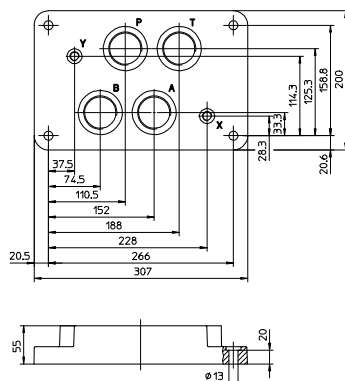
ISO 4401:2005
Mounting surface: 4401-10-09-0-05



Matching valves Set of screw
to be ordered separately

DP-64	SET SC-DP6
DP-65	SET SC-DP6
DPH-68	SET SC-DP6
DPH-69	SET SC-DP6
DPHI-6	SET SC-DP6
DPHE-6	SET SC-DP6
DPHA-6	SET SC-DP6
DPHW-6	SET SC-DP6
DPZO-*-6	SET SC-DP6

BA-708

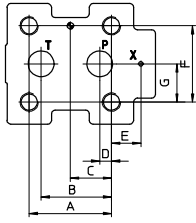


VERSIONS

BA-708: basic version with ports P, A, B, T (1 1/2") and X, Y (1/4") on the base.

Code	Ports (GAS) A,B,P,T	X-Y	Ø Counterbore S [mm]	R [mm]	Mass [Kg]
BA-708	1 1/2"	1/4"	63,5	21,5	17

**Mounting surface
ISO 6264: 1998**



Matching valves Set of screw

to be ordered separately

AGAM-10	SET SC-AGA-10
AGMZO-10	SET SC-AGA-10
AGAM-20	SET SC-AGA-20
AGMZO-20	SET SC-AGA-20
AGAM-32	SET SC-AGA-32
AGMZO-32	SET SC-AGA-32

size	A	B	C	D	E	F	G
10	53,8	47,5	22,1	22,1	-	53,8	26,9
20	66,7	55,6	33,4	11,1	23,8	70	35
32	88,9	76,2	44,5	12,7	31,8	82,6	41,3

**BA-306
Mounting surface
ISO 6264-06-09-0-97**

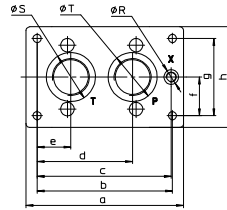
matching valves:
AGAM-10
AGMZO--10

**BA-406/506
Mounting surface
ISO 6264-08-13-0-97**

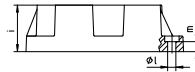
matching valves:
AGAM-20
AGMZO--20

**BA-706
Mounting surface
ISO 6264-10-17-0-97**

matching valves:
AGAM-32
AGMZO--32



BA-*06



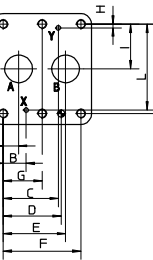
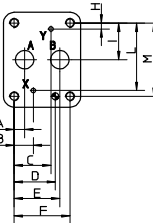
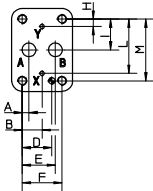
Code	a	b	c	d	e	f	g	h	i	l	m	Ø Blade		
												S	R	T
BA - 306	130	104	97	64,5	19,5	27	54	80	40	8,4	15	36,5	21,5	30
BA - 406	180	150	133,25	92,25	37,25	37,5	75	105	50	10,5	13	36,5	21,5	36,5
BA - 506												46	21,5	46
BA - 706	204	175	173,5	123,5	43,5	50	100	130,5	60	10,5	13	63,5	21,5	63,5

VERSIONS

BA-*06: basic version, see figure on left and dimensional tables.

Code	size	Ports (GAS)			Mass [Kg]
		P	T	X	
BA - 306	10	1/2"	3/4"	1/4"	1,5
BA - 406	20	3/4"	3/4"	1/4"	3,5
BA - 506	20	1"	1"	1/4"	3,5
BA - 706	32	1 1/2"	1 1/2"	1/4"	6

**Mounting surface
ISO 5781: 2000**



Matching valves Set of screw

to be ordered separately

AGI*-10(20)	SET SC-AGI
AGRL(E)-10(20)	SET SC-AGI
AGRCZO-10(20)	SET SC-AGI
AGI*-32	SET SC-AGI-32
AGRL(E)-32	SET SC-AGRL-32

**Mounting surface
ISO 5781-06-07-0-00**

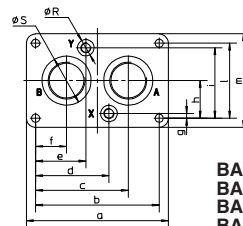
matching valves:
AGI*-10
AGRL-10
AGRLE-10
AGRZO--10

**Mounting surface
ISO 5781-08-10-0-00**

matching valves:
AGI*-20
AGRL-20
AGRLE-20
AGRZO--20

**Mounting surface
ISO 5781-10-13-0-00**

matching valves:
AGI*-32
AGRL-32
AGRLE-32



**BA-305
BA-505
BA-705
BA-705A**

Code	a	b	c	d	e	f	g	h	i	l	m	n	p	q	Ø Blade	
															S	R
BA - 305	113	90	67	45	45	23	8	33,3	58,7	66,7	90	30	10,5	10	30	21,5
BA - 505	133	110	82,5	64,5	45,5	27,5	6,4	39,7	73	79,4	102,5	42	10,5	10	46	21,5
BA - 705 BA - 705A	184	160	120	95	65	40	6	48,5	91	97	121	60	10,5	13	63,5	21,5

VERSIONS

BA-*05 and BA-705A see figure on left and dimensional tables.

Code	size	Ports (GAS)			Mass [Kg]
		A	B	X-Y	
BA - 305	10	1/2"	1/2"	1/4"	1
BA - 505	20	1"	1"	1/4"	2
BA - 705	32	1 1/2"	1 1/2"	1/4"	7,5

**Mounting surface
ISO 5781-06-07-0-00**

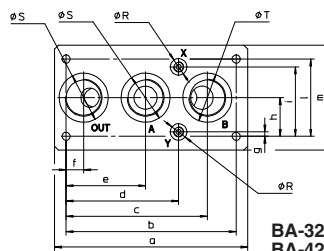
matching valves:
AGIU-10

**Mounting surface
ISO 5781-08-10-0-00**

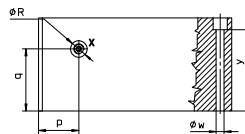
matching valves:
AGIU-20

**Mounting surface
ISO 5781-10-13-0-00**

matching valves:
AGIU-32



**BA-325/*
BA-425/*
BA-625/***



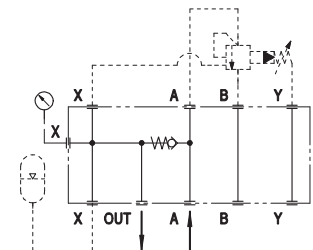
VERSIONS

BA-325: special version with ISO 5781 size 10 mounting surface and incorporated check valve for use with unloading valves type AGIU-10 in circuits with accumulators.

BA-425: special version with ISO 5781 size 20 mounting surface and incorporated check valve for use with unloading valves type AGIU-20 in circuits with accumulators.

BA-625: special version with ISO 5781 size 32 mounting surface and incorporated check valve for use with unloading valves type AGIU-32 in circuits with accumulators.

BLOCK DIAGRAM



Note: the cracking pressure of the check valve (2 or 4 bar) must be always indicated in the model code.

size	A	B	C	D	E	F	G	H	I	L	M	Code	a	b	c	d	e	f	g	h	i	l	m	n	p	q	w	y	ØS	ØR	ØT	Code	size	Ports (GAS)				Mass [Kg]
																																		A	B	OUT	X-Y	
10	7,1	21,4	21,4	31,8	35,7	42,9	-	7,9	33,3	58,7	66,7	BA-325	150	124	102	77	57	17	7,9	33,3	58,7	66,7	90	60	40	30	10,5	45	30	21,5	36,5	BA-325	10	1/2"	3/4"	1/2"	1/4"	4
20	11,1	20,6	39,7	44,5	49,2	60,3	-	6,4	39,7	73	79,4	BA-425	205	177,5	139,25	112,85	84,25	29,25	4,2	37,5	70,8	75	109	90	56	45	10,5	75	46	21,5	46	BA-425	20	1"	1"	1"	1/4"	10,5
32	16,7	24,6	59,6	62,7	67,5	84,1	42,1	4	48,4	92,9	96,8	BA-625	250	220	182,7	145,6	102,7	22,7	5,6	50	89,75	100	135,5	120	52	80	10,5	105	63,5	21,5	63,5	BA-625	32	1 1/2"	1 1/2"	1 1/2"	1/4"	26