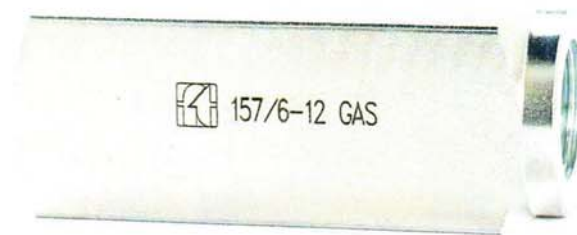


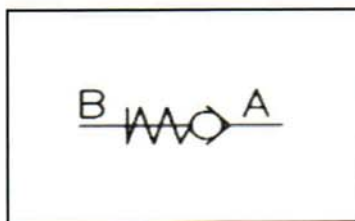
**FT - 157/6**

**VALVOLA UNIDIREZIONALE IN LINEA  
A PISTONCINO**

*CHECK VALVE POPPET TYPE*



**SCHEMA IDRAULICO / *HIDRAULIC DIAGRAM***



30

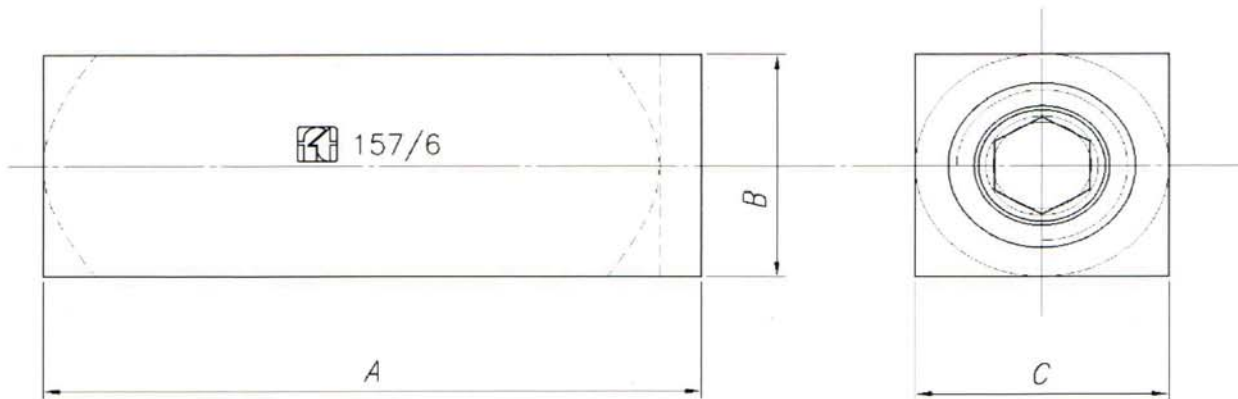
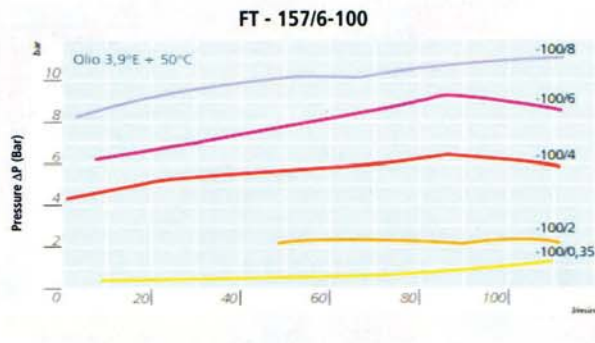
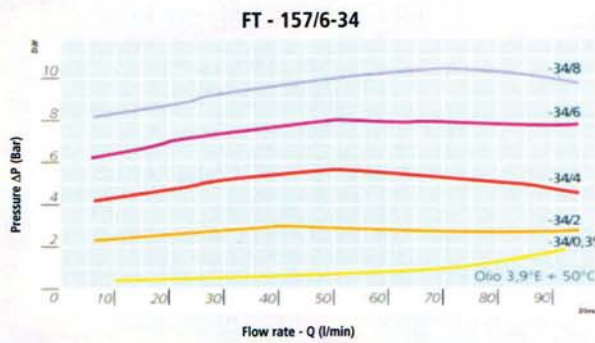
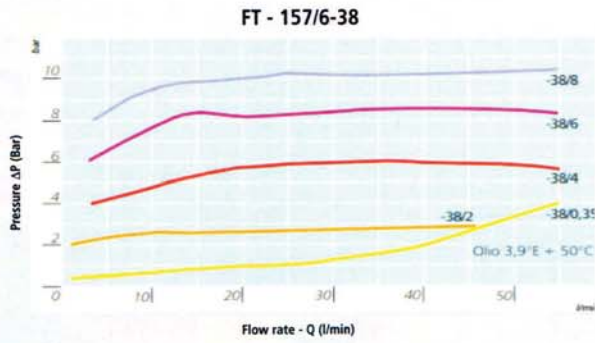
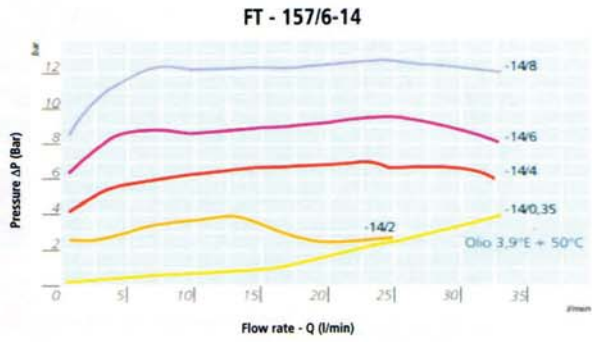


**NOTE COSTRUTTIVE**

Corpo Valvola: acciaio  
Valvola: acciaio  
Molla: C85 UNI EN 10270-1  
Protezione superficiale: zincatura trivalente  
Classe contaminazione fluido:  
ISO 4406 19/17/14

**FEATURES**

*Body: steel  
Check valve: steel  
Spring: C85 UNI EN 10270-1  
Surface protection: zinc plating  
Fluid contamination class:  
ISO 4406 19/17/14*



TIPO / TYPE	A	B	C	PRESSIONE MAX MAX PRESSURE	PESO KG WEIGHT KG
FT - 157/6 1/4	63	20	20	400	0,150
FT - 157/6 3/8	68	25	25	400	0,250
FT - 157/6 1/2	80,5	30	30	400	0,400
FT - 157/6 3/4	99,5	35	35	400	0,600
FT - 157/6 1"	117	45	45	320	1,100