

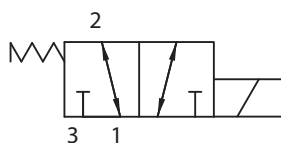
Elettrovalvola a cartuccia 3 vie 2 posizioni a cursore, azionamento diretto.
3 way 2 position spool type, solenoid operated cartridge valves, direct acting.

- COD. **EVM22 32A2**
- GRANDEZZA / SIZE **M22**

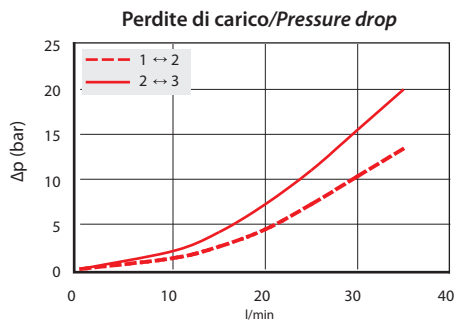
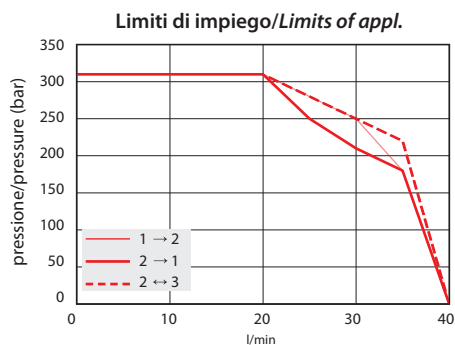
■ SPECIFICHE / SPECIFICATIONS

Cavità Cavity	C 2215 - 3
Pressione max. Max. Op. pressure	310 bar
Portata max. Max Flow	35 l/min
Trafilamento interno Internal Leakage	Max. 50 cm ³ /3min a 310 bar con Oil 32 cSt
Blocchetti Standard Standard Manifolds	Cap. 9
Bobine Coils	Cap. 6 - Size 09

■ SCHEMA / SYMBOL

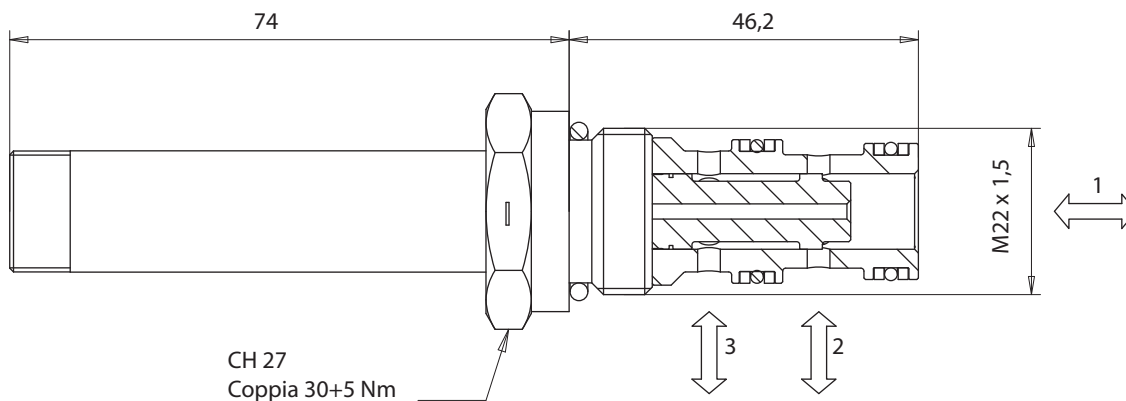


■ PRESTAZIONE / PERFORMANCE



Viscosità Olio: 32 cSt - Temperatura: 55°C
Oil Viscosity: 32 cSt - Temperature: 55°C

■ DIMENSIONI / DIMENSION



■ INFORMAZIONE PER L'ORDINE / ORDERING INFORMATION

TIPO / TYPE **EV** **M22** **32A2** - -

MODELLO / MODEL _____

VERSIONE / VERSION _____

GUARNIZIONI / SEALS: _____
 • Omettere se NBR / Omit if NBR
 • V = FKM

COMANDI MANUALI / MANUAL OVERRIDE:
 • Omettere se non richiesto / Omit if not required

- EP3 (STD)
- EV2
- EB1

Cap. 8