

型号说明/Model Code

KHB(BKH) **G1/2** **1** **1** **1** **2** **04** *****
 ① ② ③ ④ ⑤ ⑥ ⑦ ⑧

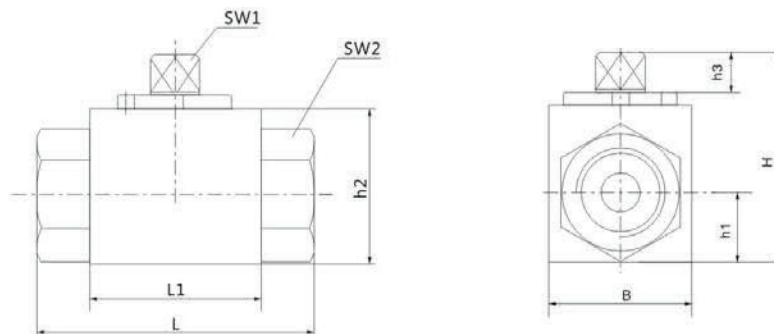
- ① 产品代号/Product code**
 KHB-阀块形球阀DN04-25/40 KHB-Valve block Ball-shaped DN04-25/40
 KHM-袖套形球阀DN32-50 KHM-Sleeves Ball-shaped DN32-50
- ② 螺纹规格或管子外径和连接形式/Thread size or the pipe diameter and connection type**
- ③ 阀体和接头体材料/Valve and joints material**
 1-碳钢/Carbon steel 4-不锈钢/Stainless Steel
- ④ 球体和控制芯轴材料/Ball and spindle material control**
 1-碳钢/Carbon steel 4-不锈钢/Stainless Steel
- ⑤ 球体处密封材料/The seal material**
 1-POM 4-聚四氟乙烯/Polytetrafluoroethylene 5-PEEK
- ⑥ 接头密封和控制芯轴密封/Joint seal and Control spindle seal**
 2-NBR 4-FPM 6-EPDM
- ⑦ 手柄形式/Handle Type**
 01-铝合金曲柄/Aluminum alloy crank 04-锌合金直柄/Zinc Alloy Straight Shank
 02-铝合金直柄/Aluminum alloy straight handle 05-钢质曲柄/Steel crank
 03-锌合金曲柄/Zinc alloy crank 06-钢质直柄/Steel Straight handle
- ⑧ 表面处理/Surface treatment**
 默认电镀蓝白锌/Default plating blue white zinc
 其它要求请说明/Please specify other requirements



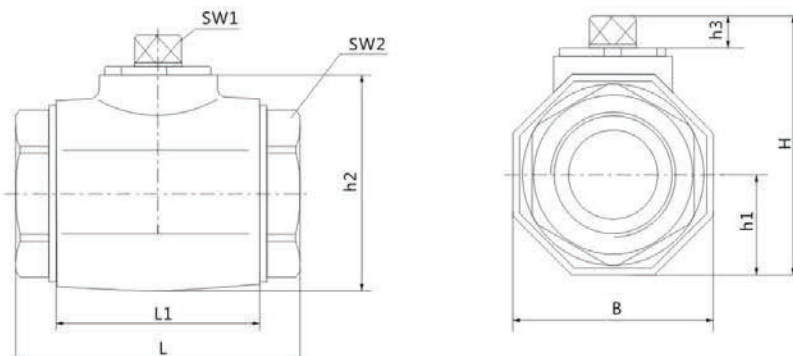
注：工作温度(°C)/Operating temperature(°C)
 -30~80

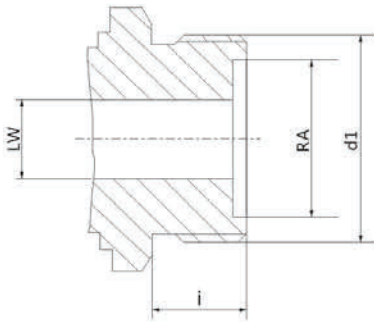
外形尺寸/Dimensions

● KHB(BKH)

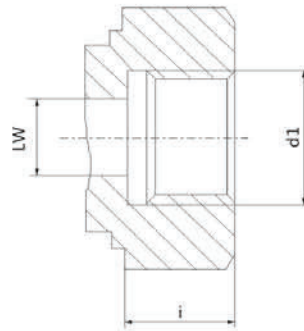


● KHM

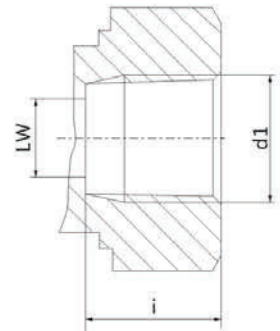




JB987-77



ISO 228



ANSI B1.20.1

JB987-77外螺纹端面密封/External thread seal

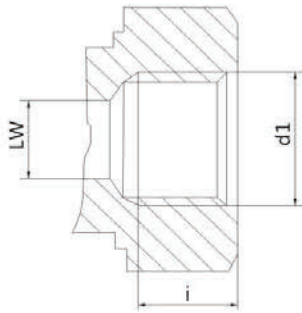
型号 Model	DN	PN	LW	RA	d1	i	L	L1	B	H	h1	h2	h3	SW1	SW2
KHB-M12×1.25	4	500	4	8	M12×1.25	9	61	39	28	44.5	13	34	8	9	24
KHB-M16×1.5	6	500	6	11	M16×1.5	11	69	39	28	44.5	13	34	8	9	24
KHB-M22×1.5	8	500	8	16	M22×1.5	12	76	43	32	52.5	17	40	8	9	27
KHB-M27×1.5	10	500	10	20	M27×1.5	12	76	43	32	52.5	17	40	8	9	32
KHB-M30×1.5	16	400	15	24	M30×1.5	13	84	48	38	63.5	19	46	11	9	32
KHB-M36×2	20	315	20	30	M36×2	15	103	61	48	75	24	57	12	12	41
KHB-M42×2	25	315	25	35	M42×2	18	116	66	57	82	28.5	64	12	12	46
KHM-M52×2	32	315	30	40	M52×2	20	149	84	82	108	41	87.5	14	14	55
KHM-M60×2	40	315	38	50	M60×2	22	174	92	93	119.5	46.5	99	14	17	70
KHM-M72×2	50	315	48	60	M72×2	24	178	100	110	135.5	55	115	14	17	80

ISO 228内螺纹/Internal thread

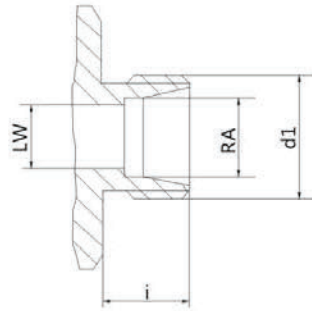
型号 Model	DN	PN	LW	d1	i	L	L1	B	H	h1	h2	h3	SW1	SW2
KHB-G1/8	4	500	6	G1/8	10	69	39	28	44.5	13	32	8	9	24
KHB-G1/4	6	500	6	G1/4	14	69	39	28	44.5	13	32	8	9	24
KHB-G3/8	10	500	10	G3/8	14	72	43	32	52.5	17	40	8	9	27
KHB-G1/2	13	500	13	G1/2	16	83	49	35	52.5	17	40	8	9	32
KHB-G1/2	16	400	15	G1/2	16	83	48	38	63.5	19	46	11	12	32
KHB-G3/4	20	315	20	G3/4	18	95	61	48	75	24	57	12	12	41
KHB-G1	25	315	25	G1	20.5	113	66	57	82	28.5	64	12	12	46
KHB-G1 ¹ / ₄	25/32	315	25	G1 ¹ / ₄	22	120	66	60	82	28.5	64	12	14	55
KHB-G1 ¹ / ₂	25/40	315	25	G1 ¹ / ₂	24	130	66	60	82	28.5	64	12	14	55
KHM-G1 ¹ / ₄	32	315	30	G1 ¹ / ₄	22	110	84	82	108	41	87.5	14	17	60
KHM-G1 ¹ / ₂	40	315	38	G1 ¹ / ₂	24	130	92	93	119.5	46.5	99	14	17	70
KHM-G2	50	315	48	G2	26	140	100	110	135.5	55	115	14	17	80

ANSI B1.20.1 NPT 内螺纹/NPT Female

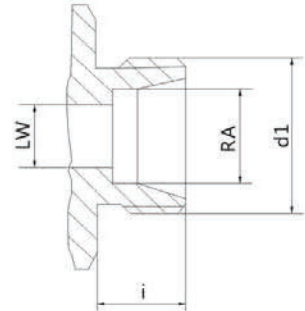
型号 Model	DN	PN	LW	d1	i	L	L1	B	H	h1	h2	h3	SW1	SW2
KHB-1/8NPT	4	500	6	1/8NPT	10.5	69	39	28	44.5	13	32	8	9	24
KHB-1/4NPT	6	500	6	1/4NPT	14	69	39	28	44.5	13	32	8	9	24
KHB-3/8NPT	10	500	10	3/8NPT	14	72	43	32	52.5	17	40	8	9	27
KHB-1/2NPT	13	500	13	1/2NPT	17	83	49	35	52.5	17	40	8	9	32
KHB-3/4NPT	20	315	20	3/4NPT	19	95	61	48	75	24	57	12	12	41
KHB-1NPT	25	315	25	1NPT	22.5	113	66	57	82	28.5	64	12	12	50
KHB-1 ¹ / ₄ NPT	25/32	315	25	1 ¹ / ₄ NPT	22.5	120	66	60	82	28.5	64	12	14	55
KHB-1 ¹ / ₂ NPT	25/40	315	25	1 ¹ / ₂ NPT	25	130	66	60	82	28.5	64	12	14	55
KHM-1 ¹ / ₄ NPT	32	315	30	1 ¹ / ₄ NPT	25	120	84	82	108	41	87.5	14	14	55
KHM-1 ¹ / ₂ NPT	40	315	38	1 ¹ / ₂ NPT	25	130	92	93	119.5	46.5	99	14	17	70
KHM-2NPT	50	315	48	2NPT	30	140	100	110	135.5	55	115	14	17	80



SAE J514



DIN 2353 LR



DIN 2353 SR

SAE J 514 UN/UNF 内螺纹/Internal thread

型号 Model	DN	PN	LW	d1	i	L	L1	B	H	h1	h2	h3	SW1	SW2
KHB-SAE4	6	500	6	SAE4	12	69	39	28	44.5	13	32	8	9	24
KHB-SAE6	10	500	10	SAE6	13	72	43	32	52.5	17	40	8	9	27
KHB-SAE8	13	500	13	SAE8	15	83	49	35	52.5	17	40	8	9	32
KHB-SAE12	20	315	20	SAE12	20	95	61	48	75	24	57	12	12	41
KHB-SAE16	25	315	25	SAE16	20	113	66	57	82	28.5	64	12	12	46
KHB-SAE20	25/32	315	25	SAE20	20	120	66	60	82	28.5	64	12	12	55
KHB-SAE24	25/40	315	25	SAE24	20	130	66	60	82	28.5	64	12	12	55
KHM-SAE20	32	315	30	SAE20	20	120	84	82	108	41	87.5	14	14	55
KHM-SAE24	40	315	38	SAE24	20	130	92	93	119.5	46.5	99	14	17	70
KHM-SAE32	50	315	40	SAE32	20	140	100	110	135.5	55	115	14	17	80

DIN 2353 轻系列/light series

请注意管路连接的压力等级

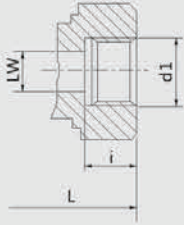
型号 Model	DN	PN	LW	RA	d1	i	L	L1	B	H	h1	h2	h3	SW1	SW2
KHB-06LR	4	500	4	6	M12×1.5	10	67	39	28	44.5	13	32	8	9	24
KHB-08LR	6	500	6	8	M14×1.5	10	67	39	28	44.5	13	32	8	9	24
KHB-10LR	8	500	8	10	M16×1.5	11	74	43	32	52.5	17	40	8	9	27
KHB-12LR	10	500	10	12	M18×1.5	11	74	43	32	52.5	17	40	8	9	27
KHB-15LR	13	500	13	15	M22×1.5	12	82	49	35	52.5	17	40	8	9	32
KHB-15LR	16	400	13	15	M22×1.5	12	82	48	38	63.5	19	46	11	9	32
KHB-18LR	13	500	13	18	M26×1.5	12	82	49	35	52.5	17	40	8	9	32
KHB-18LR	16	400	15	18	M26×1.5	12	82	48	38	63.5	19	46	11	12	32
KHB-22LR	20	315	19	22	M30×2	14	101	61	48	75	24	57	12	12	41
KHB-28LR	25	315	25	28	M36×2	14	108	66	57	82	28.5	64	12	12	46
KHB-35LR	25/32	315	25	35	M45×2	16	112	66	60	82	28.5	64	12	14	46
KHM-35LR	32	315	30	35	M45×2	16	141	84	82	108	41	87.5	14	14	60
KHM-42LR	40	315	38	42	M52×2	16	162	92	93	119.5	46.5	99	14	17	70

DIN 2353 重系列/Heavy Series

请注意管路连接的压力等级

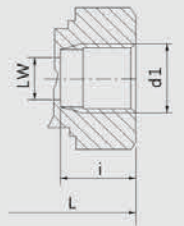
型号 Model	DN	PN	LW	RA	d1	i	L	L1	B	H	h1	h2	h3	SW1	SW2
KHB-08SR	4	500	5	8	M16×1.5	12	73	39	28	44.5	13	32	8	9	24
KHB-10SR	6	500	6	10	M18×1.5	12	73	39	28	44.5	13	32	8	9	24
KHB-12SR	8	500	8	12	M20×1.5	12	76	43	32	52.5	17	40	8	9	27
KHB-14SR	10	500	10	14	M22×1.5	14	80	43	32	52.5	17	40	8	9	27
KHB-16SR	13	500	13	16	M24×1.5	14	86	49	35	52.5	17	40	8	9	32
KHB-20SR	13	500	13	20	M30×2	16	90	49	35	52.5	17	40	8	9	32
KHB-20SR	16	400	15	22	M30×2	16	90	48	38	63.5	19	46	11	9	32
KHB-25SR	20	315	19	25	M36×2	18	109	61	48	75	24	57	12	12	41
KHB-30SR	25	315	25	30	M42×2	20	120	66	57	82	28.5	64	12	12	46
KHB-38SR	25/32	315	25	38	M52×2	22	124	66	60	82	28.5	64	12	14	55
KHM-38SR	32	315	30	38	M52×2	22	153	84	82	108	41	87.5	14	14	60

公制内螺纹



型号 Model	DN	PN	LW	d1	i	L	L1	B	H	h1	h2	h3	SW1	SW2
KHB-N-M14×1.5	6	500	6	M14×1.5	14	69	39	28	44.5	13	32	8	9	22
KHB-N-M18×1.5	10	500	10	M18×1.5	13	72	43	32	52.5	17	40	8	9	27
KHB-N-M22×1.5-SW9	13	500	13	M22×1.5	15	83	49	35	52.5	17	40	8	9	30
KHB-N-M22×1.5-SW12	16	400	15	M22×1.5	16	83	48	38	63.5	19	46	11	12	32
KHB-N-M27×2	20	315	20	M27×2	18	95	61	48	75	24	57	12	14	41
KHB-N-M33×2	25	315	25	M33×2	20	113	66	57	85	28.5	64	12	14	50
KHB-N-M42×2	32	315	30	M42×2	22	120	73	82	108	41	87.5	14	17	60
KHB-N-M48×2	40	315	38	M48×2	24	130	94	93	119.5	46.5	99	14	17	70
KHB-N-M60×2	50	315	48	M60×2	26	140	100	110	135.5	55	115	14	17	80

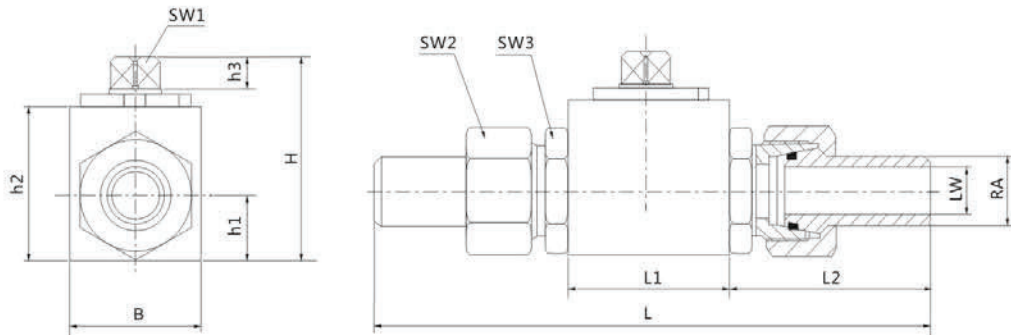
ISO 7-1内螺纹



型号 Model	DN	PN	LW	d1	i	L	L1	B	H	h1	h2	h3	SW1	SW2
KHB-1/4BSPT	6	500	6	Rc1/4	14	69	38	28	44.5	13	32	8	9	22
KHB-3/8BPST	10	500	10	Rc3/8	14	72	43	32	52.5	17	40	8	9	27
KHB-1/2BSPT	13	500	13	Rc1/2	17	83	49	35	52.5	17	40	8	9	30
KHB-3/4BSPT	20	315	20	Rc3/4	20	95	61	48	75	24	57	12	14	41
KHB-1BSPT	25	315	25	Rc1	22.5	113	66	57	85	28.5	64	12	14	50
KHM-1 ¹ / ₄ BSPT	32	315	30	Rc1 ¹ / ₄	25	120	84	82	108	41	87.5	14	17	60
KHM-1 ¹ / ₂ BSPT	40	315	38	Rc1 ¹ / ₂	25	130	92	93	119.5	46.5	99	14	17	70
KHM-2BSPT	50	315	48	Rc2	30	140	100	110	135	55	115	14	17	80

PN单位bar

锥形封焊接式



型号 Model	DN	LW	RA	L	L1	L2	B	H	h1	h2	h3	SW1	SW2	SW3
KHB-14MZ	8	8	14	143	43	50.5	32	52.5	17	40	8	9	27	27
KHB-16MZ	10	10	16	145	43	51.5	32	52.5	17	40	8	9	32	30
KHB-20MZ	15	13	20	156	49	54.5	38	63.5	19	46	11	12	36	32
KHB-25MZ	20	18	25	190	61	65	48	75	24	57	12	14	41	41
KHB-30MZ	25	20	30	204	66	69.5	57	82	28.5	64	12	14	50	50

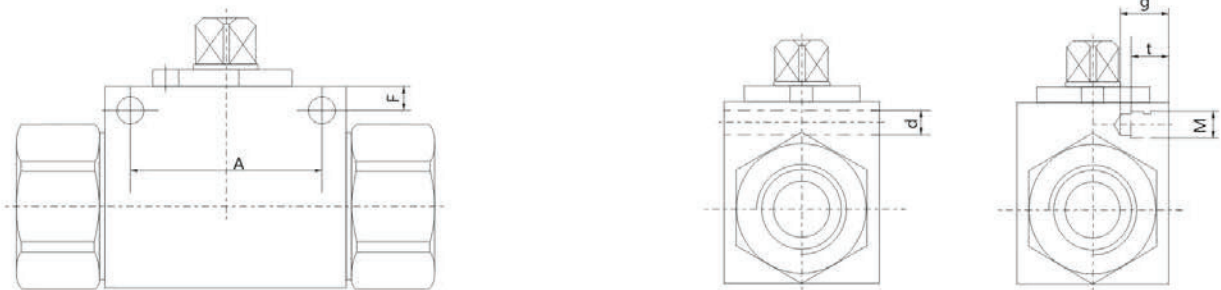
锥密封焊接式最高压力为315bar

订货示例

- (1) 阀块形内螺纹连接，螺纹规格G3/4，材料为常规组合，手柄为锌合金压式曲柄，表面环保锌，其型号：KHB-G3/4-04环保锌；
- (2) 袖套形球阀，管子外径为35，卡套式轻系列，材料为常规组合，钢质压式曲柄，表面环保锌，其型号：KHM-35LR-06环保锌；
- (3) 有特殊要求请与我公司商洽。



带安装系列



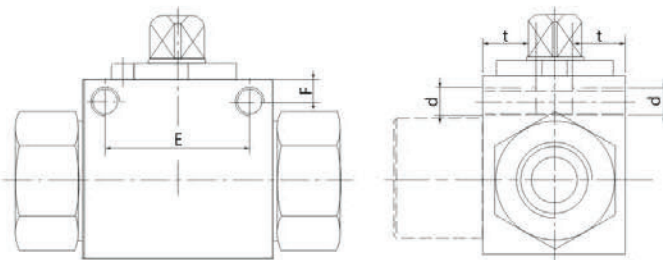
通孔连接尺寸/Full Holes Dimensions

DN	A	d	F
4	30	4.6	5
6	30	5	4.8
10	32	6.6	5
13	37.5	6.6	4.8
16	37.5	6.6	5
20	48.5	6.5	6
25	50.5	6.5	6
32	50.5	8.5	5.5

螺纹孔连接尺寸/Thread Holes Dimensions

DN	A	t	F	g	M
4	30	6.7	6	9	M6
6	30	6.7	6	9	M6
10	32	8	5.5	10	M6
13	37.5	9	6	11	M6
16	37.5	8	8	10.5	M6
20	45	13	7.5	15	M10
25	45	13	7.5	15	M10
32	45	13	7.5	15	M10

侧面双边螺纹安装孔



DN	E	F	t	d
4	24	4.5	9	M6
6	24	4.5	9	M6
10	32	5.5	12	M6
13	36	6	12	M6
16	32	6.5	12	M6
20	45	7.5	12	M6
25	45	7.5	12	M6
25/32	45	7.5	12	M6