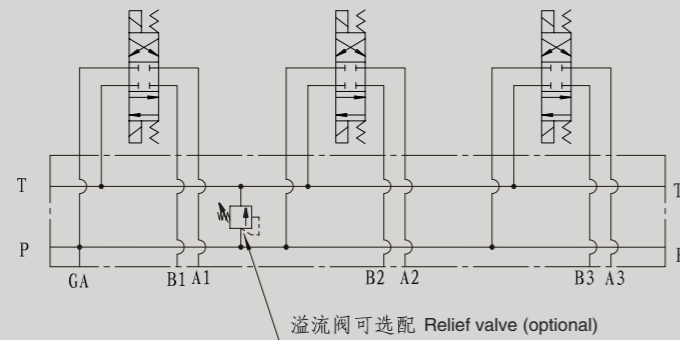


HSD(A)ZVB6P 阀板系列

HSD(A)ZVB6P SERIES MANIFOLD

符号 SYMBOL



HSZVB16P 阀板 MANIFOLD



A=铝LD7最高压力20.7MPa
D=钢45#最高压力31.5MPa
A=Aluminum max pressure 20.7MPa
D=Steel max pressure 31.5MPa

ZVB6=6通路阀板
ZVB6=NG6 manifold

P=并联油路块
P=Parallel connection

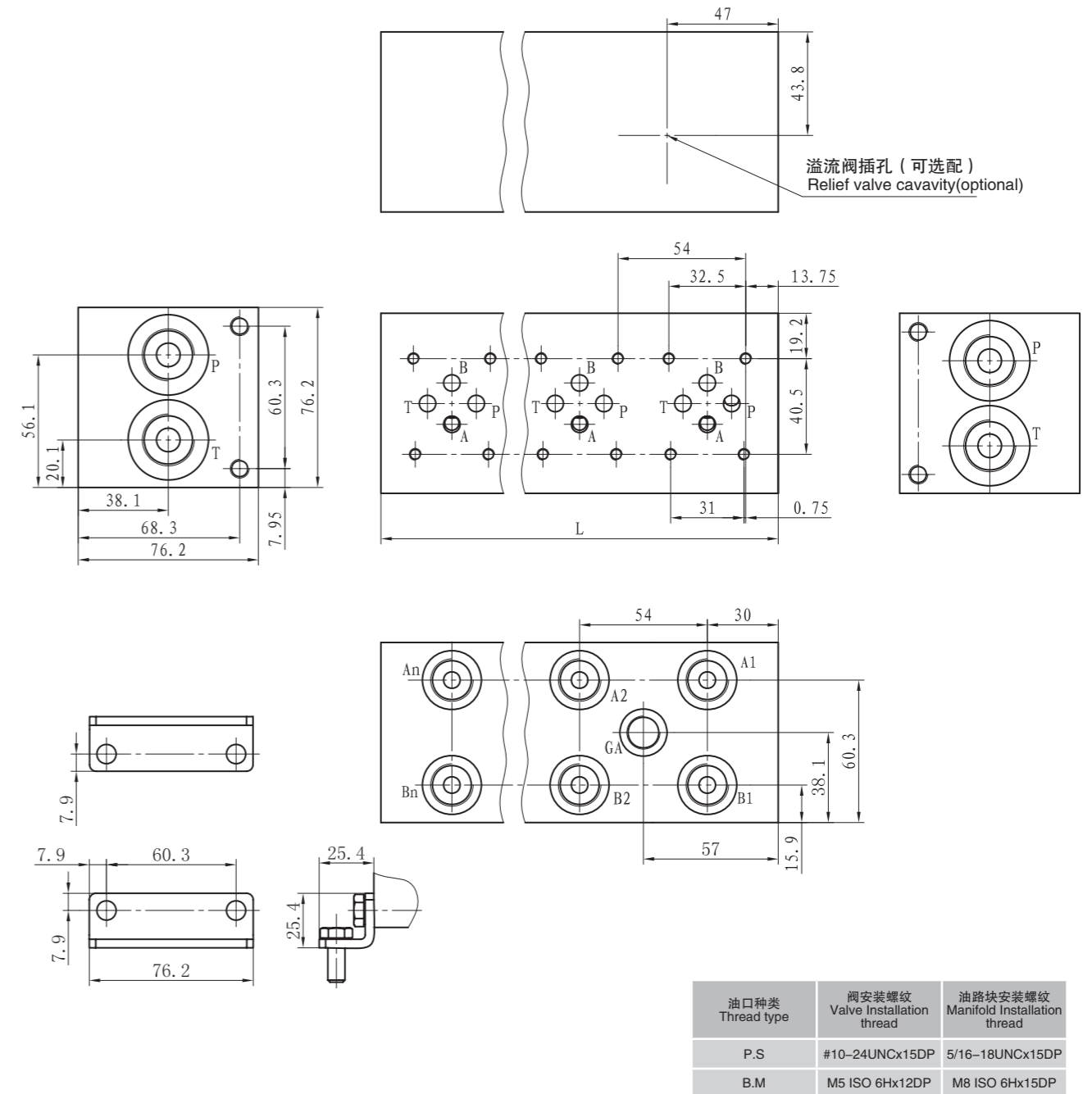
并联数量 Stations number
1-2-3-4-5-6-7-8-9-10

附加说明
For further details

Cavity 省略=无溢流阀插孔
C=海德福斯插孔10-2
No code=Without cavity of relief valve
C=With cavity of relief valve 10-2

油路块螺纹 Thread type	P,T	A,B	GA
P NPT(Z)	NPT1/2	NPT3/8	NPT1/4
S SAE	SAE10	SAE8	SAE6
B BSP(G)	BSP1/2	BSP3/8	/
M M	M22X1.5	M18X1.5	/

HSZVB6P 阀板 外形尺寸 HSZVB6P Installation Dimensions



并联数量 Stations number	1	2	3	4	5	6	7	8	9	10	11	12	13	14	15	16
L(mm)	60	114	168	222	276	330	384	438	492	546	600	654	708	762	816	870

注：1联带溢流阀的油路块长度为79.2mm。1联不带压力表接口。
Attention: The length of 1 station manifold with relief valve is 79.22mm, 1 station manifold without oil port for pressure gauge.