



ELETTROVALVOLA 2/2 A OTTURATORE - NORMALMENTE CHIUSA

2/2 SOLENOID OPERATED VALVE-POPPET TYPE - NORMALLY CLOSED

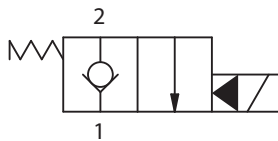
Elettrovalvola a cartuccia 2 vie 2 posizioni a tenuta, pilotata, normalmente chiusa.
2 way 2 positon poppet type, solenoid operated cartridge valve, normally closed.

- COD. **EVM33 D1**
- GRANDEZZA / SIZE **M33**

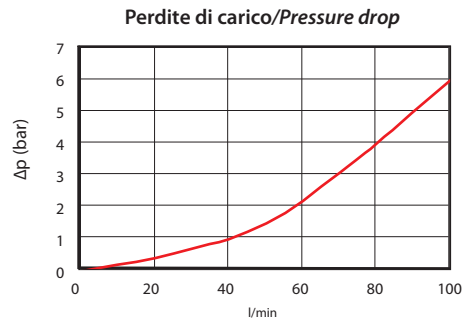
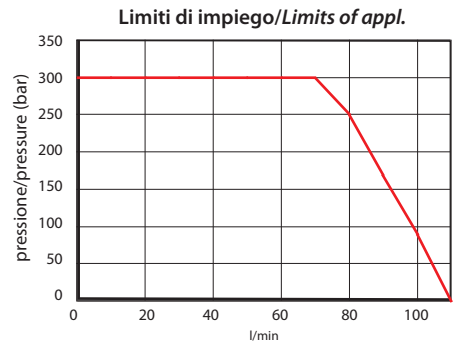
■ SPECIFICHE / SPECIFICATIONS

Cavità <i>Cavity</i>	C 332 - 2
Pressione max. <i>Max. Op. pressure</i>	300 bar
Portata max. <i>Max Flow</i>	120 l/min
Trafilamento interno <i>Internal Leakage</i>	1cm ³ /min alla max. pressione di esercizio con olio 32 cSt 1cm ³ /min at maximum operating pressure with 32 cSt oil
Blocchetti Standard <i>Standard Manifolds</i>	Cap. 9
Bobine <i>Coils</i>	Cap. 6 - Size 12

■ SCHEMA / SIMBOL

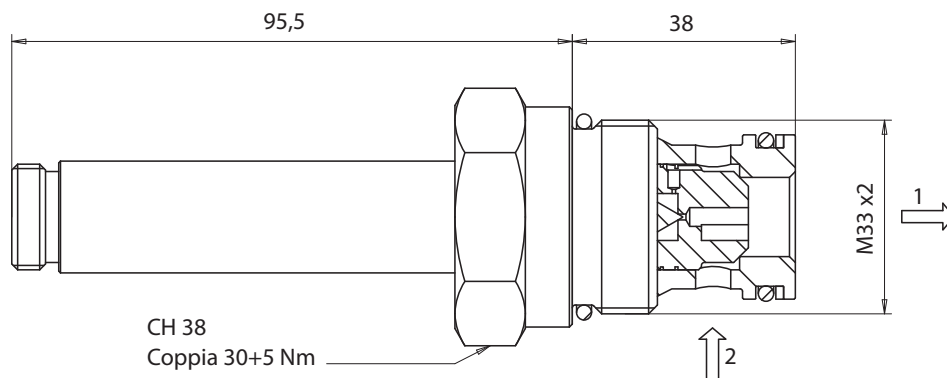


■ PRESTAZIONE / PERFORMANCE



Viscosità Olio: 32 cSt - Temperatura: 55°C
Oil Viscosity: 32 cSt - Temperature: 55°C

■ DIMENSIONI / DIMENSION



■ INFORMAZIONE PER L'ORDINE / ORDERING INFORMATION

TIPO / TYPE	EV	M33	D1	-	-	COMANDI MANUALI / MANUAL OVERRIDE: • Omettere se non richiesto / Omit if not required
MODELLO / MODEL						
VERSIONE / VERSION						• EV3 (STD) • EV4 • EB1
GUARNIZIONI / SEALS:						Cap. 8

• Omettere se NBR / Omit if NBR
• V = FKM