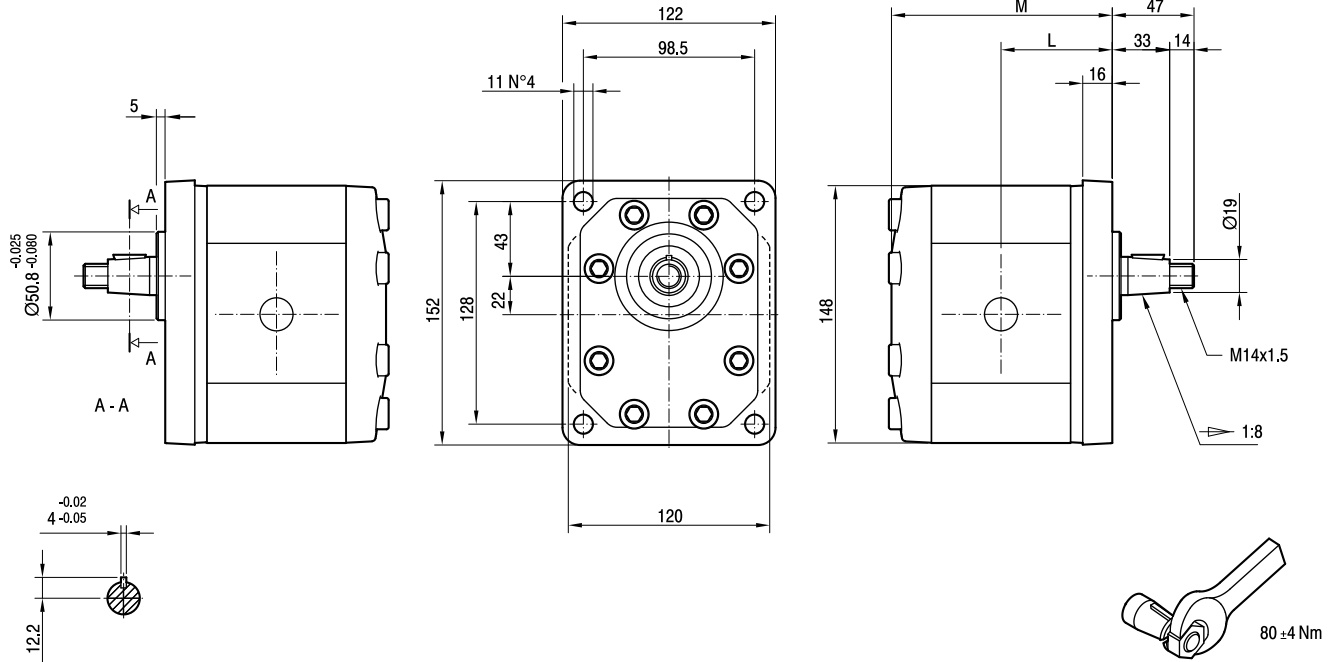


MANDATA
OUTLET

ASPIRAZIONE
INLET

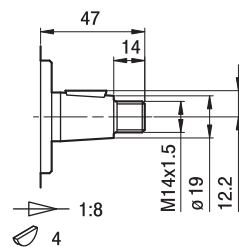
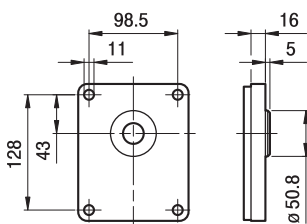


| TIPO TYPE | CILINDRATA DISPLACEMENT | PORTATA a 1500 giri/min FLOW at 1500 rev/min | PRESSIONI MASSIME MAX PRESSURE | | | VELOCITÀ MASSIMA MAX SPEED | DIMENSIONI DIMENSIONS | |
|---------------|--|---|-----------------------------------|----------------|----------------|-------------------------------|--------------------------|-----|
| | | | P ₁ | P ₂ | P ₃ | | L | M |
| | cm ³ /giro [cm ³ /rev] | litri/min [litres/min] | bar | bar | bar | giri/min [rpm] | mm | mm |
| GHP3-D-30-FG | 20 | 29 | 280 | 295 | 310 | 3500 | 64 | 127 |
| GHP3-D-33-FG | 22 | 31 | 280 | 295 | 310 | 3500 | 64,5 | 128 |
| GHP3-D-40-FG | 26 | 37 | 280 | 295 | 310 | 3000 | 66 | 131 |
| GHP3-D-50-FG | 33 | 48 | 270 | 285 | 300 | 3000 | 68,5 | 136 |
| GHP3-D-60-FG | 39 | 56 | 260 | 275 | 290 | 3000 | 70,5 | 140 |
| GHP3-D-66-FG | 44 | 62 | 250 | 265 | 280 | 2800 | 72 | 143 |
| GHP3-D-80-FG | 52 | 74 | 230 | 245 | 260 | 2400 | 75 | 149 |
| GHP3-D-94-FG | 61 | 87 | 210 | 225 | 240 | 2800 | 78 | 155 |
| GHP3-D-110-FG | 71 | 101 | 200 | 215 | 230 | 2500 | 81,5 | 162 |
| GHP3-D-120-FG | 78 | 112 | 180 | 195 | 210 | 2300 | 84 | 167 |
| GHP3-D-135-FG | 87 | 124 | 160 | 175 | 190 | 2000 | 87 | 173 |

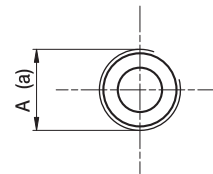
FLANGE

SHAFT

PORTS



Max 280 Nm



| TIPO TYPE | ASPIRAZIONE INLET | MANDATA OUTLET |
|-------------------------|----------------------|-------------------|
| | A | a |
| GHP3...30 ÷ GHP3...33 | G3/4 | G3/4 |
| GHP3...40 ÷ GHP3...60 | G1 | G3/4 |
| GHP3...66 ÷ GHP3...94 | G1 1/4 | G1 |
| GHP3...110 ÷ GHP3...135 | G1 1/2 | G1 1/4 |