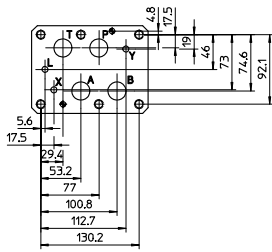






5 SINGLE STATION SUBPLATES FOR VALVES SIZE 25

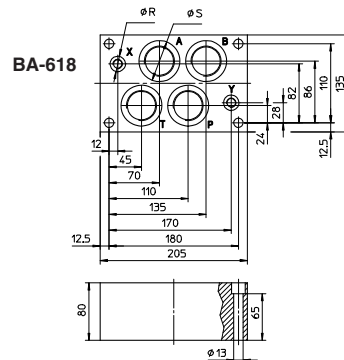
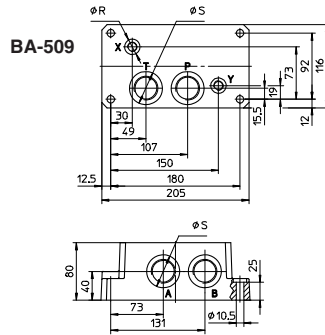
ISO 4401:2005  
Mounting surface: 4401-08-08-0-05



Matching valves

Set of screw  
(to be ordered separately)

DP-41	SET SC-DP4
DP-44	SET SC-DP4
DP-45	SET SC-DP4
DPH-48	SET SC-DP4
DPH-49	SET SC-DP4
DPHL-4	SET SC-DP4
DPHE-4	SET SC-DP4
DPHA-4	SET SC-DP4
DPHW-4	SET SC-DP4
DPZO-*-4	SET SC-DP4
DPZE-*-4	SET SC-DP4
DPZA-*-4	SET SC-DP4



VERSIONS

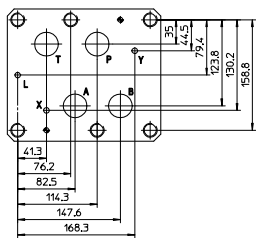
**BA-509:** basic version with ports P, T (1") and X, Y (1/4") on the base, ports A, B (1") on the side.

**BA-618:** basic version with ports P, A, B, T (1 1/4") and X, Y (1/4") on the base.

Code	Ports (GAS) A,B,P,T	X-Y	Ø Counterbore S [mm]	R [mm]	Mass [Kg]
<b>BA-509</b>	1"	1/4"	46	21,5	12,5
<b>BA-618</b>	1 1/4"	1/4"	57	21,5	13,5

6 SINGLE STATION SUBPLATES FOR VALVES SIZE 32

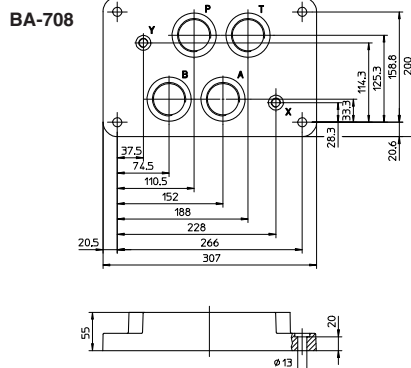
ISO 4401:2005  
Mounting surface: 4401-10-09-0-05



Matching valves

Set of screw  
(to be ordered separately)

DP-64	SET SC-DP6
DP-65	SET SC-DP6
DPH-68	SET SC-DP6
DPH-69	SET SC-DP6
DPHL-6	SET SC-DP6
DPHE-6	SET SC-DP6
DPHA-6	SET SC-DP6
DPZO-*-6	SET SC-DP6
DPZE-*-6	SET SC-DP6
DPZA-*-6	SET SC-DP6



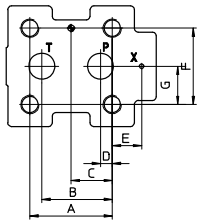
VERSIONS

**BA-708:** basic version with ports P, A, B, T (1 1/2") and X, Y (1/4") on the base.

Code	Ports (GAS) A,B,P,T	X-Y	Ø Counterbore S [mm]	R [mm]	Mass [Kg]
<b>BA-708</b>	1 1/2"	1/4"	63,5	21,5	17

7 SINGLE STATION SUBPLATES FOR PRESSURE CONTROL VALVE SIZE 10, 20 AND 32

Mounting surface  
ISO 6264: 1998



**BA-306**  
Mounting surface  
ISO 6264-06-09-0-97

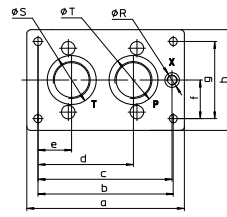
matching valves:  
AGAM-10  
AGMZO--10  
AGMZA--10

**BA-506**  
Mounting surface  
ISO 6264-08-13-0-97

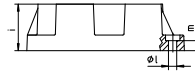
matching valves:  
AGAM-20  
AGMZO--20  
AGMZA--20

**BA-706**  
Mounting surface  
ISO 6264-10-17-0-97

matching valves:  
AGAM-32  
AGMZO--32  
AGMZA--32



**BA-306**  
**BA-506**  
**BA-706**



Matching valves Set of screw  
to be ordered separately

AGAM-10	SET SC-AGA-10
AGMZO-10	SET SC-AGA-10
AGMZE-10	SET SC-AGA-10
AGMZA-10	SET SC-AGA-10
AGAM-20	SET SC-AGA-20
AGMZO-20	SET SC-AGA-20
AGMZE-20	SET SC-AGA-20
AGMZA-20	SET SC-AGA-20
AGAM-32	SET SC-AGA-32
AGMZO-32	SET SC-AGA-32
AGMZE-32	SET SC-AGA-32
AGMZA-32	SET SC-AGA-32

size	A	B	C	D	E	F	G
10	53,8	47,5	22,1	22,1	-	53,8	26,9
20	66,7	55,6	33,4	11,1	23,8	70	35
32	88,9	76,2	44,5	12,7	31,8	82,6	41,3

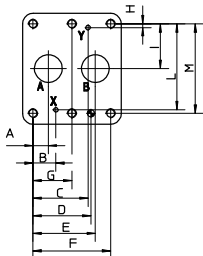
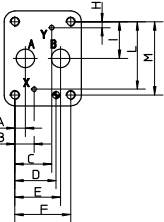
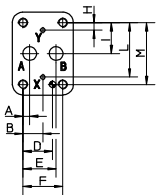
Code	a	b	c	d	e	f	g	h	i	l	m	Ø Blade		
												S	R	T
<b>BA - 306</b>	130	104	97	64,5	19,5	27	54	80	40	8,4	15	36,5	21,5	30
<b>BA - 506</b>	180	150	133,25	92,25	37,25	37,5	75	105	50	10,5	13	46	21,5	46
<b>BA - 706</b>	204	175	173,5	123,5	43,5	50	100	130,5	60	10,5	13	63,5	21,5	63,5

VERSIONS

**BA-306, BA-506, BA-706:** basic version, see figure on left and dimensional tables.

Code	size	Ports (GAS)			Mass [Kg]
		P	T	X	
<b>BA - 306</b>	10	1/2"	3/4"	1/4"	1,5
<b>BA - 506</b>	20	1"	1"	1/4"	3,5
<b>BA - 706</b>	32	1 1/2"	1 1/2"	1/4"	6

Mounting surface  
ISO 5781: 2000



Mounting surface  
ISO 5781-06-07-0-00

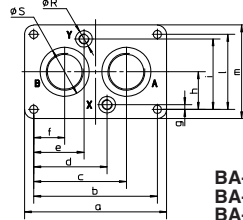
matching valves:  
AGI\*-10  
AGRL-10  
AGRLE-10  
AGRZO--10

Mounting surface  
ISO 5781-08-10-0-00

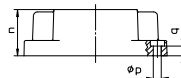
matching valves:  
AGI\*-20  
AGRL-20  
AGRLE-20  
AGRZO--20

Mounting surface  
ISO 5781-10-13-0-00

matching valves:  
AGI\*-32  
AGRL-32  
AGRLE-32



**BA-305**  
**BA-505**  
**BA-705**



Matching valves Set of screw  
to be ordered separately

AGI*-10(20)	SET SC-AGI
AGRL(E)-10(20)	SET SC-AGI
AGRCZO-10(20)	SET SC-AGI
AGRCZE-10(20)	SET SC-AGI
AGRCZA-10(20)	SET SC-AGI
AGI*-32	SET SC-AGI-32
AGRL(E)-32	SET SC-AGRL-32

Code	a	b	c	d	e	f	g	h	i	l	m	n	p	q	Ø Blade	
															S	R
<b>BA - 305</b>	113	90	67	45	45	23	8	33,3	58,7	66,7	90	30	10,5	10	30	21,5
<b>BA - 505</b>	133	110	82,5	64,5	45,5	27,5	6,4	39,7	73	79,4	102,5	42	10,5	10	46	21,5
<b>BA - 705</b>	184	160	120	95	65	40	6	48,5	91	97	121	60	10,5	13	63,5	21,5

VERSIONS

**BA-305, BA-506 and BA-705:** see figure on left and dimensional tables.

Code	size	Ports (GAS)			Mass [Kg]
		A	B	X-Y	
<b>BA - 305</b>	10	1/2"	1/2"	1/4"	1
<b>BA - 505</b>	20	1"	1"	1/4"	2
<b>BA - 705</b>	32	1 1/2"	1 1/2"	1/4"	7,5