

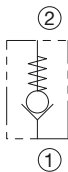
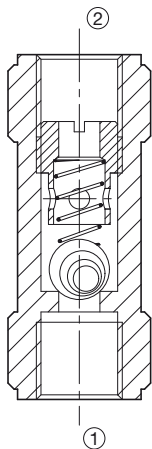
# VUS003-8000

## VALVOLA UNIDIREZIONALE IN LINEA IN LINE CHECK VALVE RÜCKSCHLAGVENTILE LEITUNGSEINBAU

La valvola permette il passaggio dell'olio da 1 a 2.  
Blocca il passaggio dell'olio nella direzione 2 in 1.

The valve opens flow passage from port 1 to 2.  
The passage from 2 to 1 is blocked.

Dieses Ventil ermöglicht den Öldurchfluß in eine einzige Richtung (von 1 nach 2). Es verhindert den Öldurchfluß in die andere Richtung (2 nach 1).



### DATI TECNICI TECHNICAL DATA TECHNISCHE ANGABEN

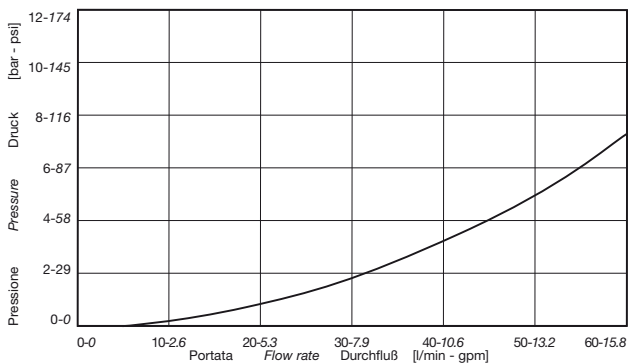
Pressione Max di funzionamento  
Max operating pressure  
Maximaler Betriebsdruck **250 (3625)  
bar (psi)**

Portata nominale  
Nominal flow  
Volumenstrom **40 (10.6)  
l/min (gpm)**

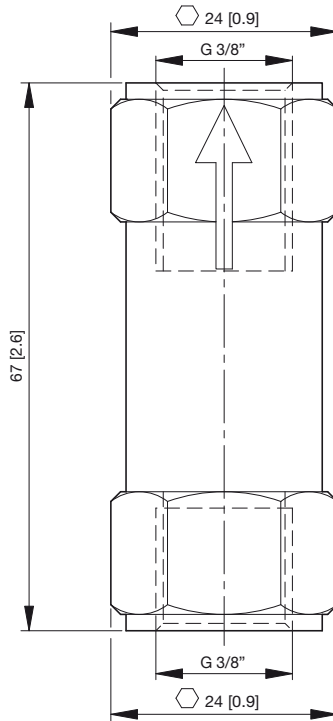
Temperatura di utilizzo  
Operating temperature  
Betriebstemperatur **-20°C + 130°C**

Trafilè  
Leakage  
Leckage **0.2 cc/min  
(200 bar; 50° C; 21 cSt; )**

### PRESTAZIONI PERFORMANCE LEISTUNG



Parametri di prova  
Testing parameters  
Prüfparameter  
50°C  
21 cSt



**COPPIA  
TORQUE  
ANZUGSMOMENT**  
35 Nm / 26 lb•ft

**PESO  
WEIGHT  
GEWICHT**  
0.17 kg / 0.37 lb

**ISTRUZIONI PER L'ORDINAZIONE    ORDERING INSTRUCTIONS    BESTELLANLEITUNG**

**VUS003-8000**