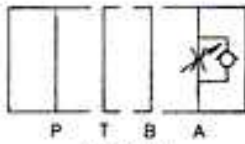


**TECHNICAL DATA**

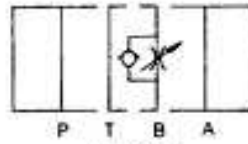
**MAX. OPERATING PRESSURE:**  
250 KGF/CM2 (3600 PSI)

**MAX. FLOW:**  
40 LPM (10.6 GPM)

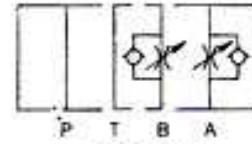
**SYMBOLS**



MTC-02A



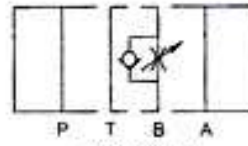
MTC-02B



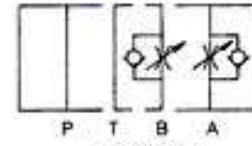
MTC-02W



MTC-02A-I



MTC-02B-I



MTC-02W-I

**REMARKS**

- CRACKING PRESSURE OF CHECK VALVE IS 0.8 BARS.
- WHEN ADJUST FLOW, USE CLOCKWISE TURN TO DECREASE THE FLOW AND USE COUNTER CLOCKWISE TURN TO INCREASE THE FLOW.
- FLOW CANNOT BE ABSOLUTELY OBSTRUCTED, SOME SMALL VOLUME WILL PASS THROUGH.

**ORDERING CODE**

**MTC -- 02 -- W -- K -- I -- 50**

DESIGN NUMBER

I: METER IN  
NO CODE: METER OUT

ADJUSTING ARM TYPE:  
K: WITH HAND KNOB  
NO CODE: WITHOUT HAND KNOB

FUNCTION PORT:  
A: A PORT  
B: B PORT  
W: A & B PORTS

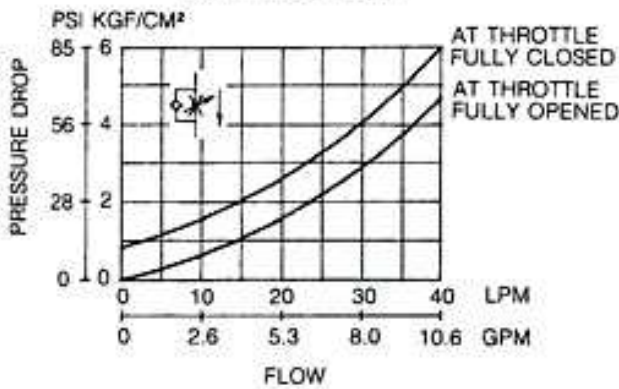
02: 1/4"

THROTTLE AND CHECK VALVES

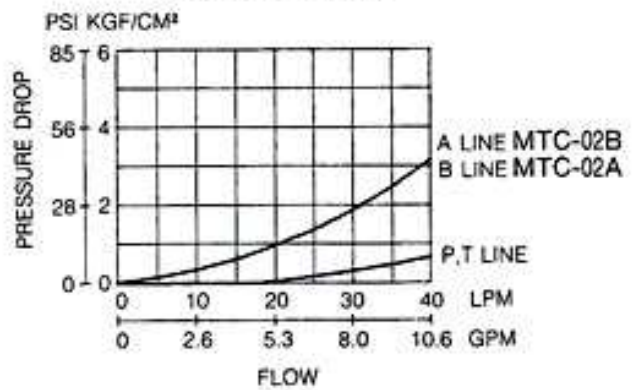
**PERFORMANCE CURVES**

MEASURED AT V=35CST AND T=50°C

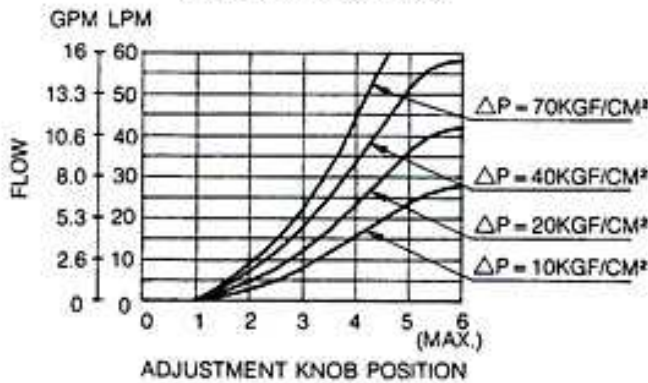
**PRESSURE DROP FOR FREE FLOW**



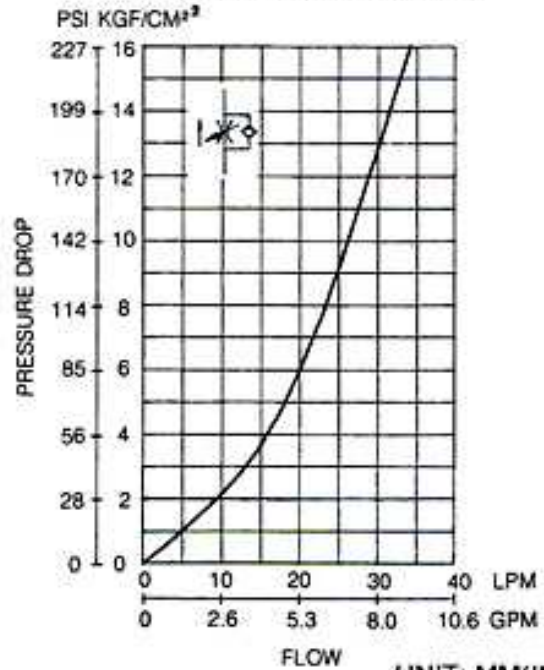
**PRESSURE DROP**



**METERED FLOW VS. DIAL POSITION**



**PRESSURE DROP AT THROTTLE FULLY OPENED**



**DIMENSIONS**

MTC-02W

