

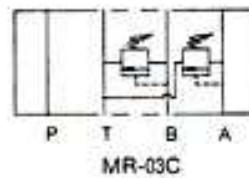
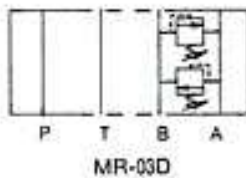
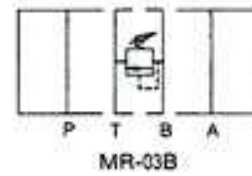
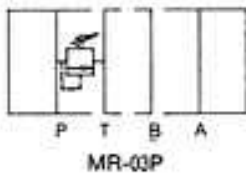


**TECHNICAL DATA**

MAX. OPERATING PRESSURE:  
 250 KGF/CM<sup>2</sup> (3600 PSI)

MAX. FLOW:  
 70 LPM (18.5 GPM)

**SYMBOLS**



**ORDERING CODE**

**MR -- 03 -- P -- K -- 1 -- 50**

DESIGN NUMBER

PRESSURE ADJUSTING RANGE  
 1: 8-70 KGF/CM<sup>2</sup> (120-1000 PSI)  
 2: 35-160 KGF/CM<sup>2</sup> (500-2300 PSI)  
 3: 70-250 KGF/CM<sup>2</sup> (1000-3600 PSI)

ADJUSTING ARM TYPE:  
 K: WITH HAND KNOB  
 NO CODE: WITHOUT HAND KNOB

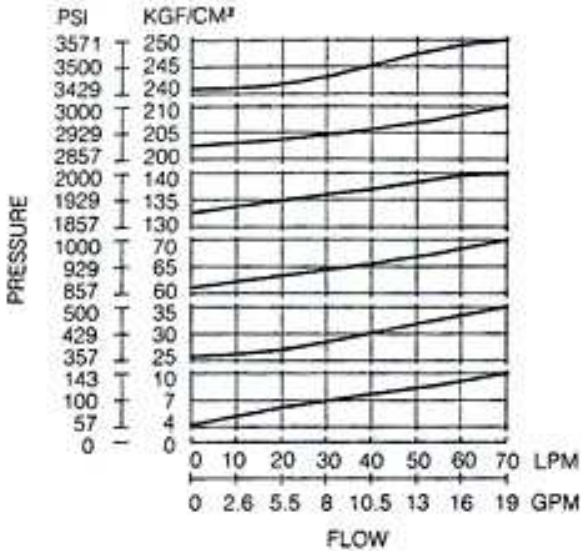
FUNCTION PORT:  
 P: P PORT  
 A: A PORT  
 B: B PORT  
 C: A & B PORTS VENTED TO TANK  
 D: A & B PORTS CROSS OVER RELIEF

PORT SIZE  
 03: 3/8"

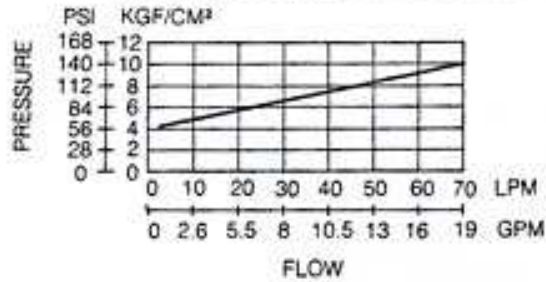
**PERFORMANCE CURVES**

MEASURED AT V=35CST AND T=50°C

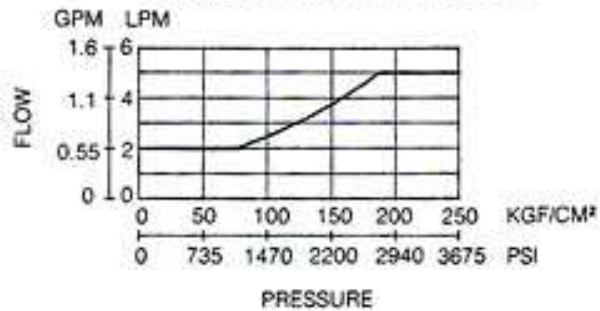
**NOMINAL OVERRIDE CHARACTERISTICS**



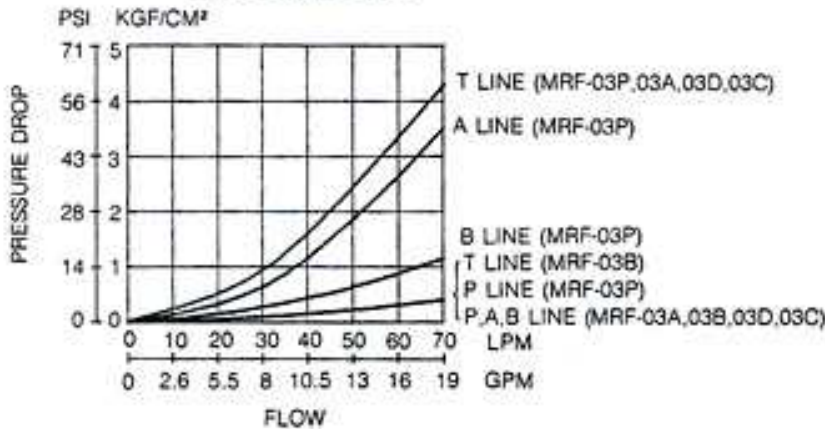
**MIN. ADJUSTMENT PRESSURE**



**MIN. FLOW VS. ADJUSTMENT PRESSURE**



**PRESSURE DROP**



**REMARKS**

- \* MINIMIZE THE BACK PRESSURE OF TANK PORT WHEN USE IT AND RECOMMEND BACK PRESSURE BELOW 2 KG/CM2.
- \* TO BE A SAFETY VALVE, MAX. OPERATING PRESSURE SHOULD BE SET BY 10-15 KG/CM2 MORE THAN EXPECTED OPERATING PRESSURE.
- \* WHEN ADJUST THE FLOW, USE CLOCKWISE TURN TO DECREASE THE FLOW AND USE COUNTER CLOCKWISE TO INCREASE THE FLOW.

MR-03 SERIES

**DIMENSIONS**

UNIT: MM (INCH)  
WEIGHT: 3.5 KGS

MR-03P/A/B

