

VUS001-4000

VALVOLA UNIDIREZIONALE IN LINEA IN LINE CHECK VALVE RÜCKSCHLAGVENTILE LEITUNGSEINBAU

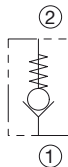
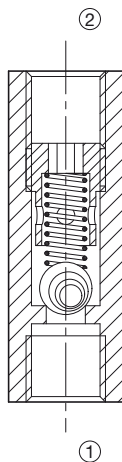
La valvola permette il passaggio dell'olio da 1 a 2.

Blocca il passaggio dell'olio nella direzione 2 in 1.

The valve opens flow passage from port 1 to 2.

The passage from 2 to 1 is blocked.

Dieses Ventil ermöglicht den Öldurchfluß in eine einzige Richtung (von 1 nach 2). Es verhindert den Öldurchfluß in die andere Richtung (2 nach 1).



DATI TECNICI TECHNICAL DATA TECHNISCHE ANGABEN

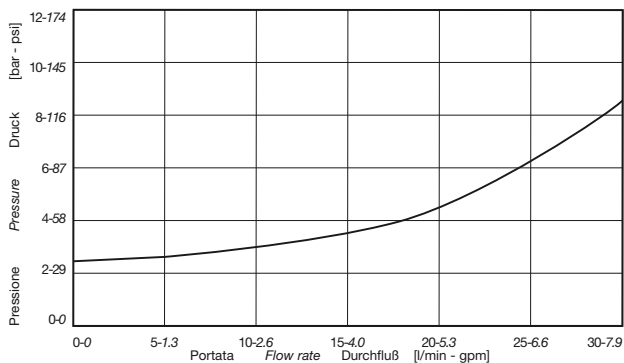
Pressione Max di funzionamento
Max operating pressure
Maximaler Betriebsdruck **250 (3625)
bar (psi)**

Portata nominale
Nominal flow
Volumenstrom **20 (5.3)
l/min (gpm)**

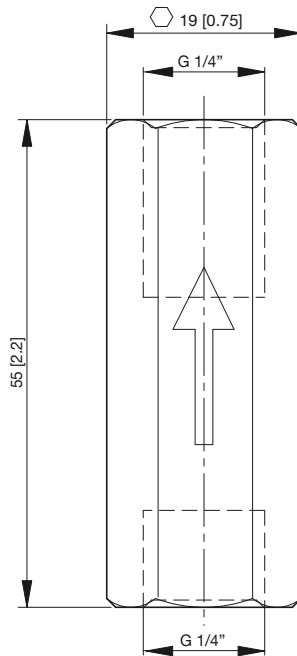
Temperatura di utilizzo
Operating temperature
Betriebstemperatur **-20°C + 130°C**

Trafile
Leakage
Leckage **0.2 cc/min
(200 bar; 50° C; 21 cSt;)**

PRESTAZIONI PERFORMANCE LEISTUNG



Parametri di prova
Testing parameters
Prüfparameter
50°C
21 cSt



COPPIA
TORQUE
ANZUGSMOMENT
15 Nm / 11 lb•ft

PESO
WEIGHT
GEWICHT
0.1 kg / 0.22 lb

ISTRUZIONI PER L'ORDINAZIONE ORDERING INSTRUCTIONS BESTELLANLEITUNG

VUS001-4000