



# High Pressure Fixed Displacement Vane Pump



## Model Code

VCM	-1M	-06	-F	-L
Product Series	Series Number	Vane Pump Displacement (c.c./rev)	Installation Type	Rotation Direction*
<b>VCM Vane Pump Series</b>	1M	06, 08, 10, 12 14, 17, 19, 23 25, 31	F : Flange Type L : Foot Type	R : Clockwise L : Counterclockwise
	2M	22, 26, 33, 38 41, 47, 53, 59 65, 75		
	3M	60, 66, 76, 85 94, 108, 116, 125		

### Remark:

\* Viewed from shaft end

## Feature

- ≡ High pressure, high efficiency, suitable for all kinds of machines.
- ≡ Low noise; agree to low-noise environmental requirement.
- ≡ Wide displacement range (6c.c. to 125c.c.)
- ≡ Special cartridge design, easy for maintenance

## Application

- ≡ Industrial machinery
- ≡ Special purpose machine
- ≡ Oil hydraulic press



## Technical Data

Type	Theoretical Displacement (c.c. /rev.)	Max. Pressure (bar)	Shaft Speed Range (rpm)		Weight (kg)		Inlet	Outlet
			Max	Min	Foot Type	Flange Type		
<b>1M-6</b>	6.1	210	1800	950	11.2	9	1"	1/2"
<b>1M-8</b>	8.0	210	1800	950	11.2	9	1"	1/2"
<b>1M-10</b>	10.1	210	1800	950	11.2	9	1"	1/2"
<b>1M-12</b>	12.2	210	1800	950	11.2	9	1"	1/2"
<b>1M-14</b>	13.7	210	1800	950	11.2	9	1"	1/2"
<b>1M-17</b>	16.6	210	1800	950	11.2	9	1"	1/2"
<b>1M-19</b>	18.6	210	1800	950	11.2	9	1"	1/2"
<b>1M-23</b>	22.7	210	1800	950	11.2	9	1"	1/2"
<b>1M-25</b>	25.3	210	1800	950	11.2	9	1"	1/2"
<b>1M-31</b>	31.0	175	1500	950	11.2	9	1"	1/2"
<b>2M-22</b>	22	210	1800	950	23.3	19	1-1/4"	3/4"
<b>2M-26</b>	26	210	1800	950	23.3	19	1-1/4"	3/4"
<b>2M-33</b>	33	210	1800	950	23.3	19	1-1/4"	3/4"
<b>2M-38</b>	38	210	1800	950	23.3	19	1-1/4"	3/4"
<b>2M-41</b>	41.3	210	1800	950	23.3	19	1-1/4"	3/4"
<b>2M-47</b>	47.2	210	1800	950	23.3	19	1-1/4"	3/4"
<b>2M-53</b>	53.1	210	1800	950	23.3	19	1-1/4"	3/4"
<b>2M-59</b>	59.2	210	1800	950	23.3	19	1-1/4"	3/4"
<b>2M-65</b>	65.2	210	1500	950	23.3	19	1-1/4"	3/4"
<b>2M-75</b>	75	175	1500	950	23.3	19	1-1/4"	3/4"



Type	Theoretical Displacement (c.c. /rev.)	Max. Pressure (bar)	Shaft Speed Range (rpm)		Weight (kg)		Inlet	Outlet
			Max	Min	Foot Type	Flange Type		
<b>3M-60</b>	60	210	1800	950	46.7	36.7	2"	1-1/4"
<b>3M-66</b>	66	210	1800	950	46.7	36.7	2"	1-1/4"
<b>3M-76</b>	76.4	210	1800	950	46.7	36.7	2"	1-1/4"
<b>3M-85</b>	85	210	1800	950	46.7	36.7	2"	1-1/4"
<b>3M-94</b>	93.8	210	1800	950	46.7	36.7	2"	1-1/4"
<b>3M-108</b>	108	175	1200	950	46.7	36.7	2"	1-1/4"
<b>3M-116</b>	115.6	160	1200	950	46.7	36.7	2"	1-1/4"
<b>3M-125</b>	125	140	1200	950	46.7	36.7	2"	1-1/4"

**Remark:**

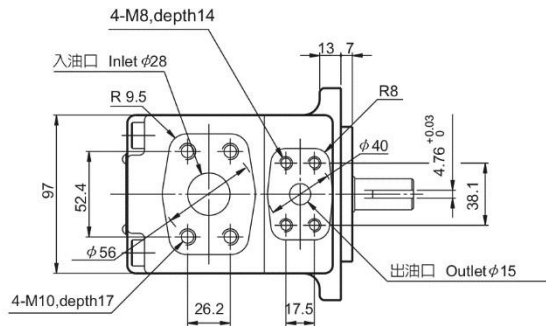
Test value of maximum pressure is according to hydraulic oil.



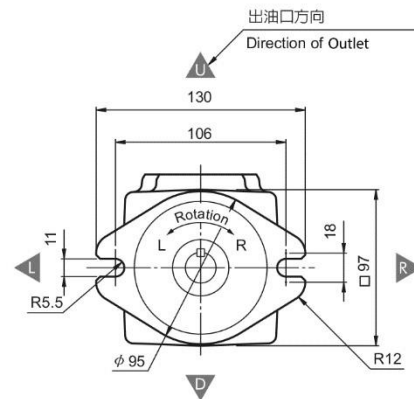
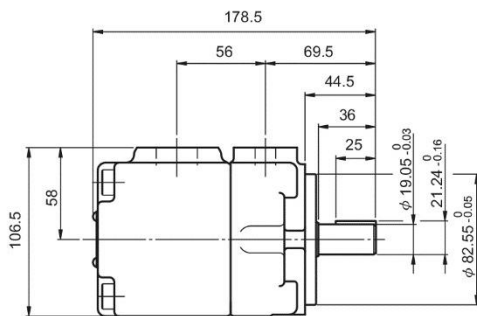
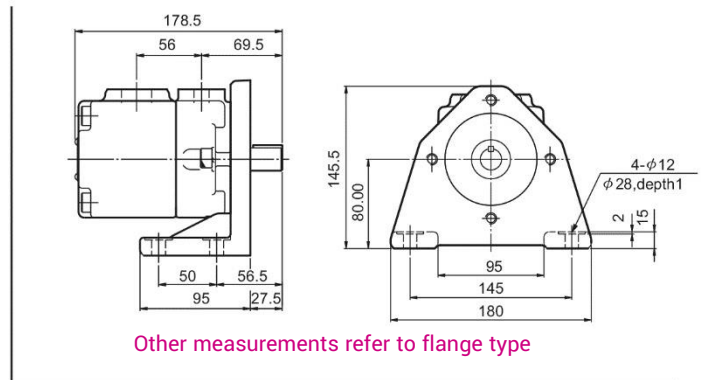
Unit: mm

Dimension

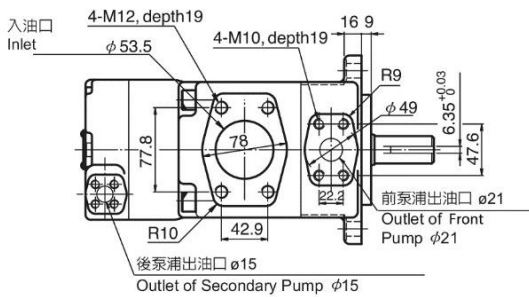
VCM-1M-\*\*-F\* (Flange Type)



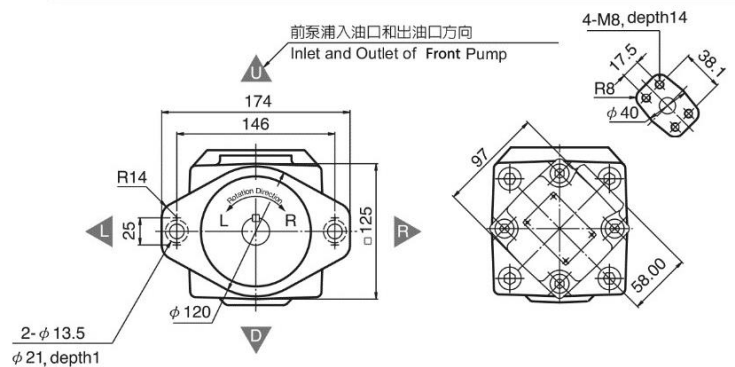
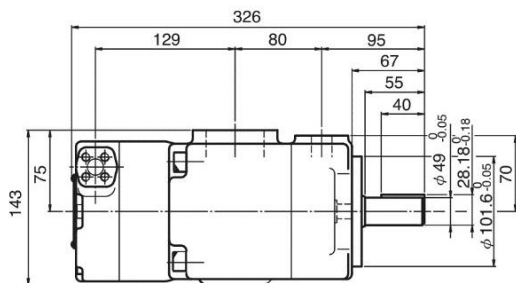
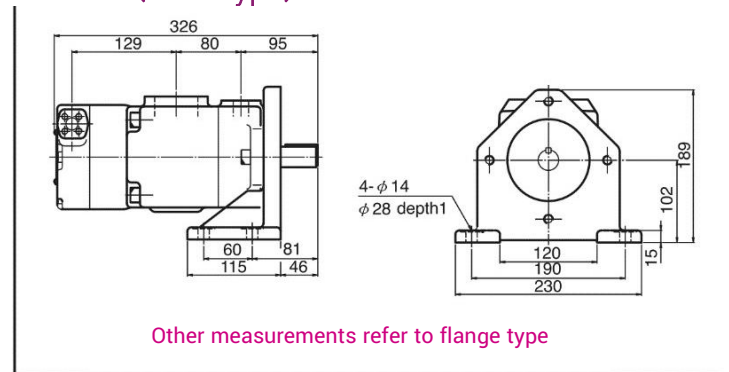
VCM-1M-\*\*-L\* (Foot Type)



VCM-2M-\*\*-F\* (Flange Type)

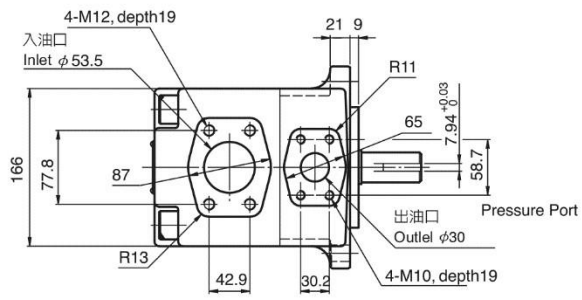


VCM-2M-\*\*-L\* (Foot Type)





### VCM-3M-\*-F\* (Flange Type)



### VCM-3M-\*-L\* (Foot Type)

