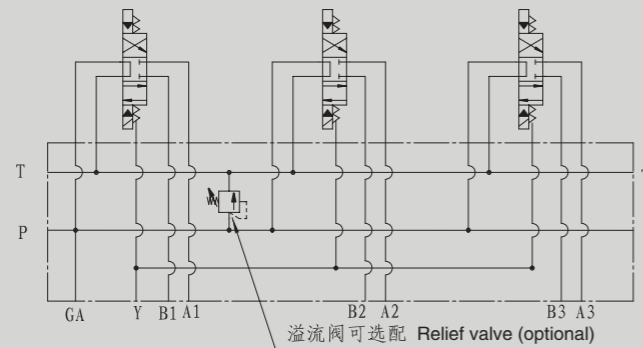


HSDZVB16P 阀板系列

HSDZVB16P SERIES MANIFOLD

符号 SYMBOL



HSZVB16P 阀板 MANIFOLD



D=钢45#最高压力31.5MPa
D=Steel max pressure 31.5MPa

ZVB16=16通径阀板
ZVB16=NG16 manifold

P=并联油路块
P=Parallel connection

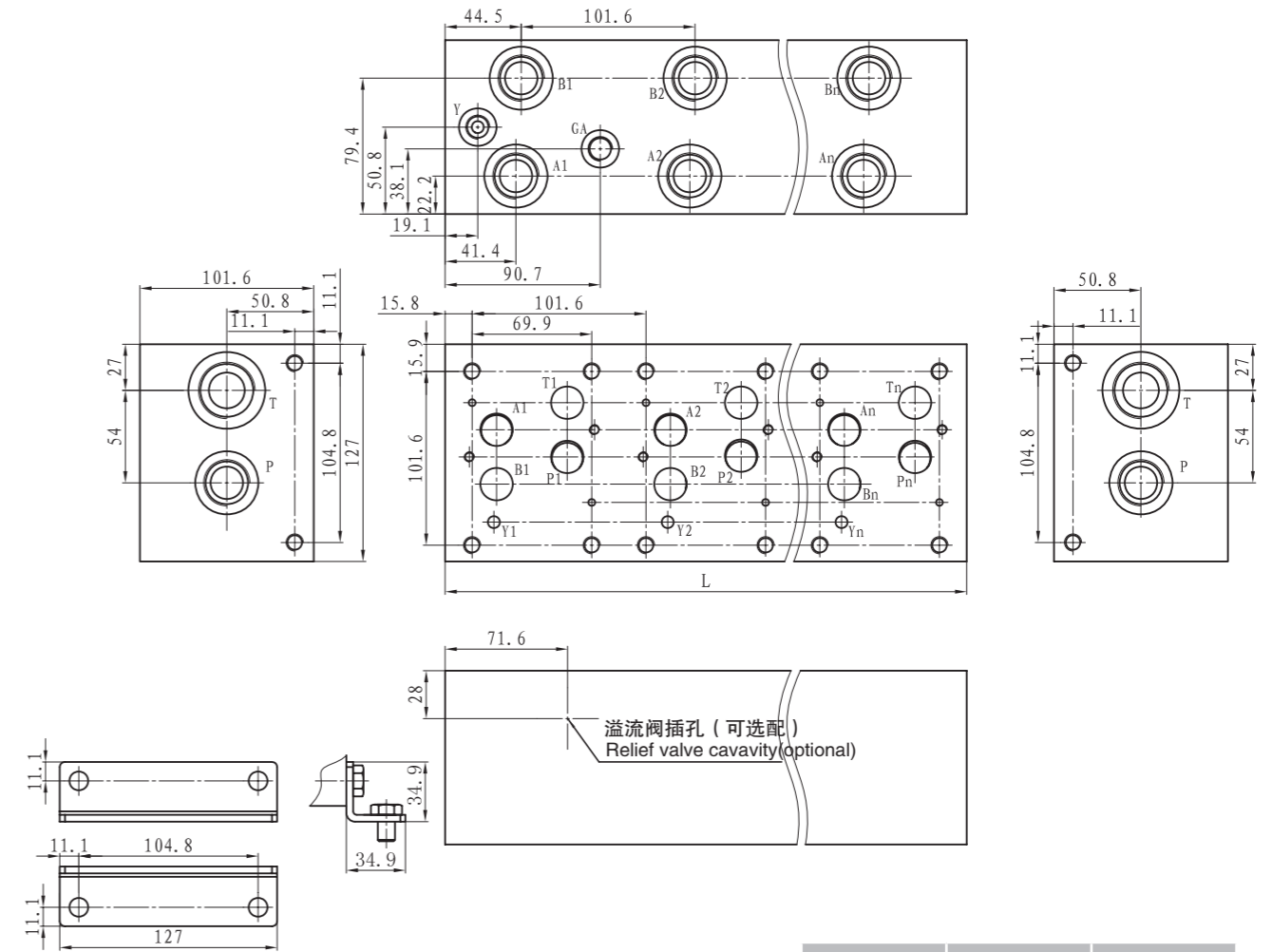
并联数量 Stations number
1-2-3-4-5-6-7-8

附加说明
For further details

省略=无溢流阀插孔
C=海德福斯插孔10-2
No code=Without cavity of relief valve
C=With cavity of relief valve 10-2

油路块螺纹 Thread type	P.A.B	T	Y	GA
P NPT(Z)	NPT3/4	NPT1	NPT3/8	NPT1/4
S SAE	SAE12	SAE16	SAE6	SAE6
B BSP(G)	BSP3/4	BSP1	BSP3/8	/
M M	M27X2	M33X2	M14X1.5	/

HSZVB16P 阀板 外形尺寸 HSZVB16P Installation Dimensions



油口种类 Thread type	阀安装螺纹 Valve Installation thread	油路块安装螺纹 Manifold Installation thread
P.S	3/8-16UNCx25DP 1/4-20UNCx19DP	3/8-16UNCx19DP
B.M	M10 ISO H6x25DP M6 ISO H6x19DP	M10 ISO H6x19DP

并联数量 Stations number	1	2	3	4	5	6	7	8
L(mm)	101.6	203.2	304.8	406.4	508	609.6	711.2	812.8

注: 1联带溢流阀的油路块长度为119.7mm。1联不带压力表接口。
Attention: The length of 1 station manifold with relief valve is 119.7mm, 1 station manifold without oil port for pressure gauge.