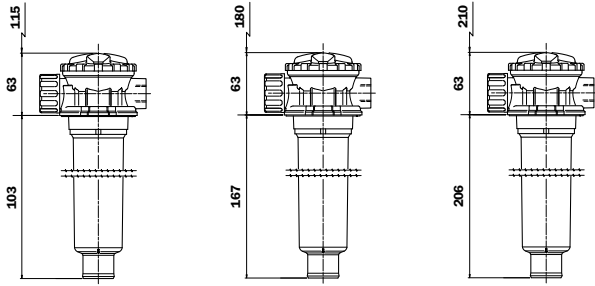


# MPT

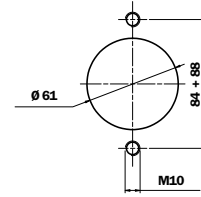


**Maximum pressure 8 bar**  
**Flow rates to 300 l/min**

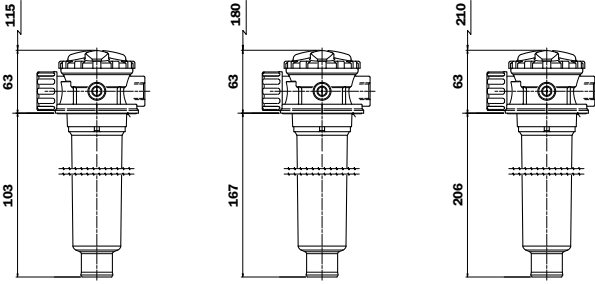
## MPT 020 - 021



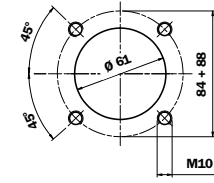
Holes on the tank  
MPT 020/021



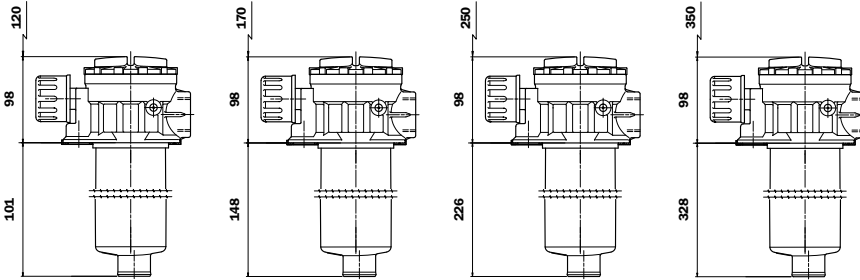
## MPT 024



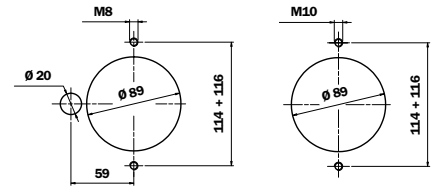
Holes on the tank  
MPT 024



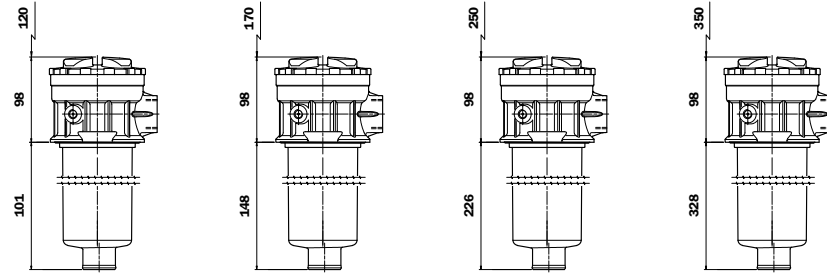
## MPT 100/101



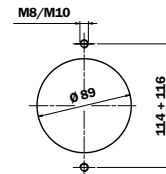
Holes on the tank  
MPT 100/101



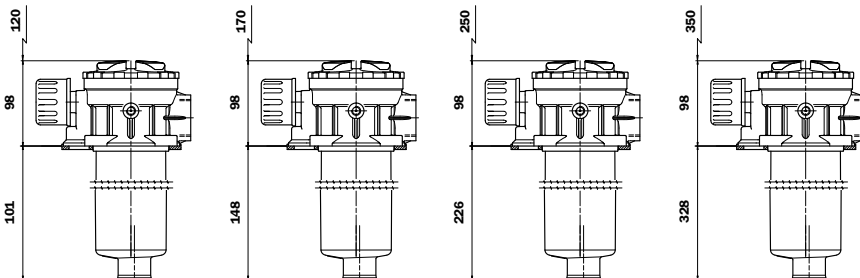
## MPT 100/101



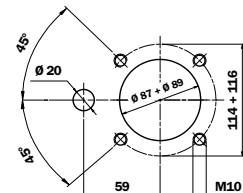
Holes on the tank  
MPT 100/101



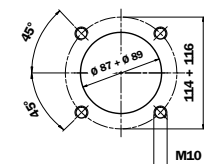
## MPT 104



Holes on the tank  
MPT 104



Holes on the tank  
MPT 104



# Technical data

## MPT

### Filter housing (Materials)

- Head: Aluminium
- Cover: Zytel
- Bowl: Nylon

### Pressure

- Working pressure: 8 bar (0,8 MPa)

### Temperature

- From -25°C to +110°C

### Bypass valve

- Opening pressure 1,75 bar  $\pm$ 10%
- Opening pressure 3 bar  $\pm$ 10%

### $\Delta p$ Elements type

- Series N and H elements: 10 bar
- Oil flow from exterior to interior.

### Seals

- Standard NBR series A
- Optional FPM series V

### Weights (kg)

Length	1	2	3	4
• MPT 020/021	0,41	0,45	0,50	-
• MPT 024	0,44	0,48	0,55	-
• MPT 100/101	1,00	1,05	1,15	1,40
• MPT 104	1,10	1,15	1,25	1,50

### Volumes (dm<sup>3</sup>)

Length	1	2	3	4
• MPT 020/021	0,24	0,35	0,42	-
• MPT 024	0,24	0,35	0,42	-
• MPT 100/101	0,72	0,93	1,28	1,74
• MPT 104	0,72	0,93	1,28	1,74

### Compatibility

- Housings compatible with:  
Mineral oils to ISO 2943 - aqueous emulsions  
synthetic fluids, water and glycol.
- The filter elements are compatible with:  
Mineral oils to ISO 2943, Synthetic fluids  
Aqueous emulsions, water and glycol  
(series W required).
- NBR seals series A, compatible with:  
Mineral oils to ISO 2943 - aqueous emulsions  
synthetic fluids, water and glycol.
- FPM seals series V, compatible with:  
Synthetic fluids type HS-HFDR-HFDS-HFDU  
To ISO 2943

## Filter Element Area

Filter element in stainless steel mesh  
Length

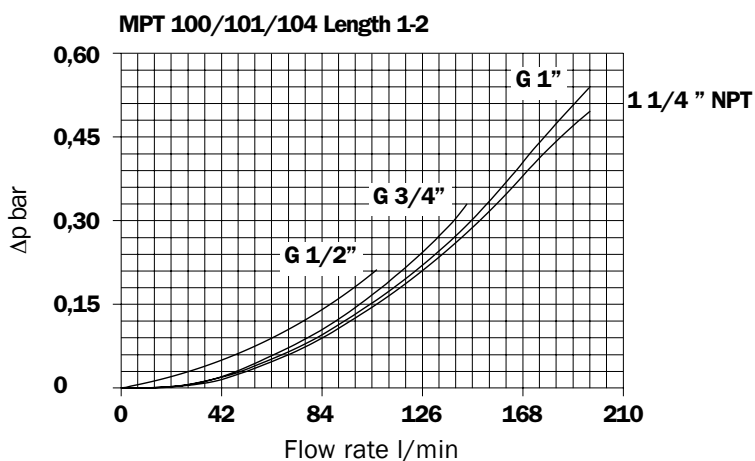
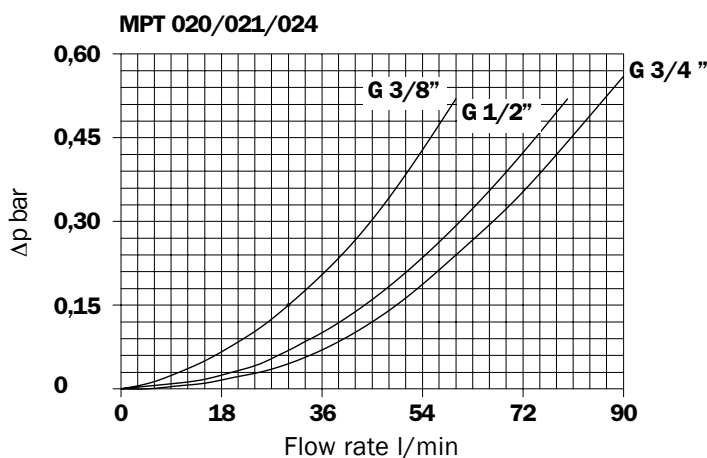
Type	1	2	3	4
MF 020	496	837	912	-
MF 100	493	781	1286	1933

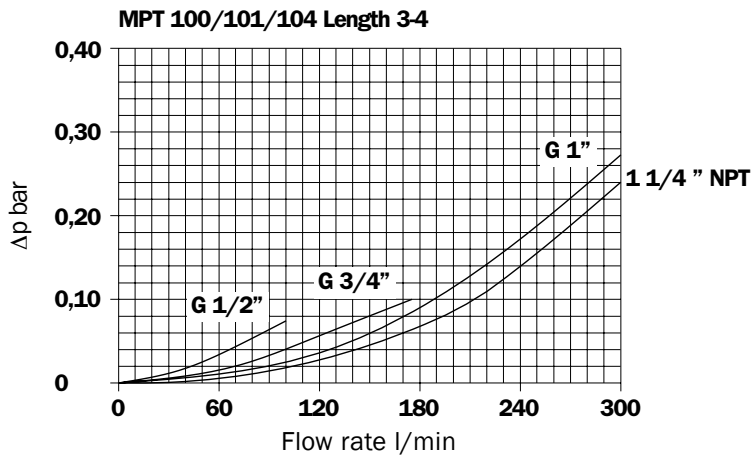
Values expressed in cm<sup>2</sup>

## Filter housings $\Delta p$ pressure drop

The curves are plotted utilising mineral oil with density of 0.86 kg/dm<sup>3</sup> to ISO 3968.

$\Delta p$  varies proportionally with density.

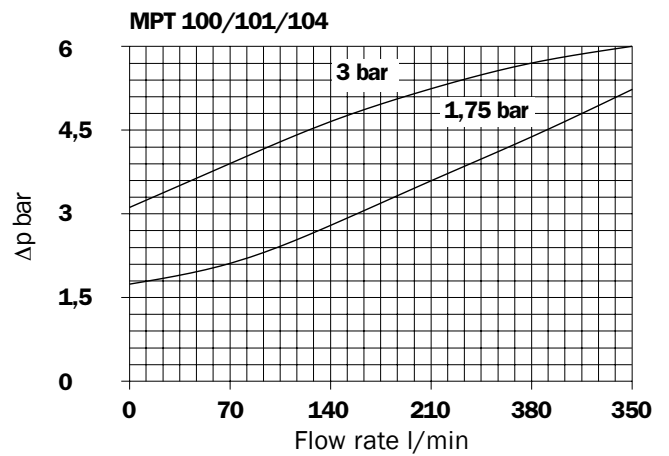
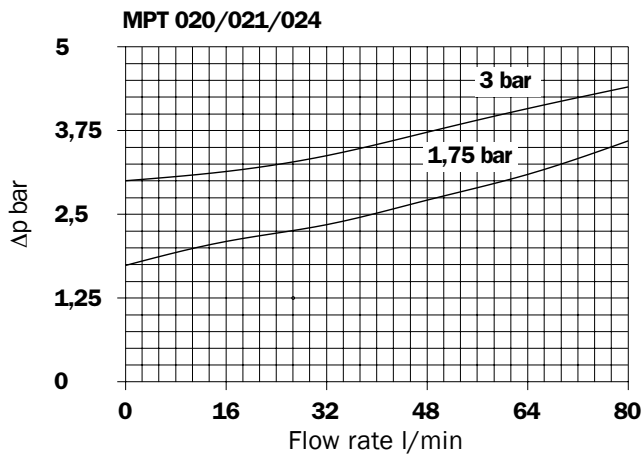




**Valves**

**Bypass valve pressure drop**

For individual filter:



**Recommended maximum flow rate**

- Pressure drop of filter assembly equal to  $\Delta p$  0,5 bar.
- Oil kinematic viscosity 30 mm<sup>2</sup>/s (cSt).
- Density 0,86 kg/dm<sup>3</sup>.

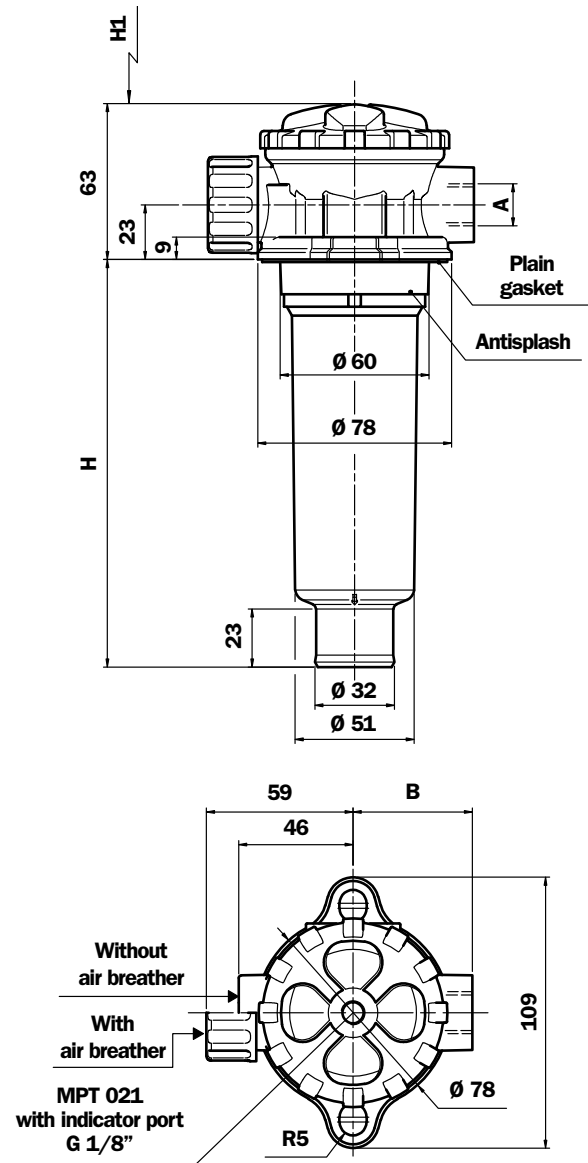
**Filtration**

	Length	A03	A06	A10	A16	A25	P10	P25	M25	M60
<b>MPT020</b>	1	10	13	25	28	65	52	78	78	78
	2	21	24	47	48	72	55	94	94	94
	3	24	28	50	54	70	54	78	78	78
<b>MPT100</b>	1	20	30	50	60	112	110	145	250	250
	2	33	40	82	92	165	174	210	360	360
	3	55	68	135	155	250	270	300	360	360
	4	95	116	195	230	292	312	350	380	380

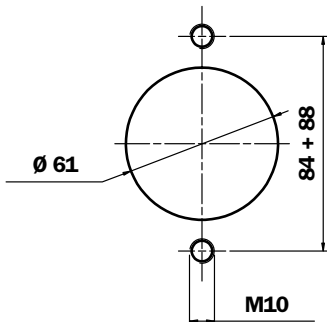
Flow rate l/min

# Dimensions

## MPT 020/021 With or Without air breather



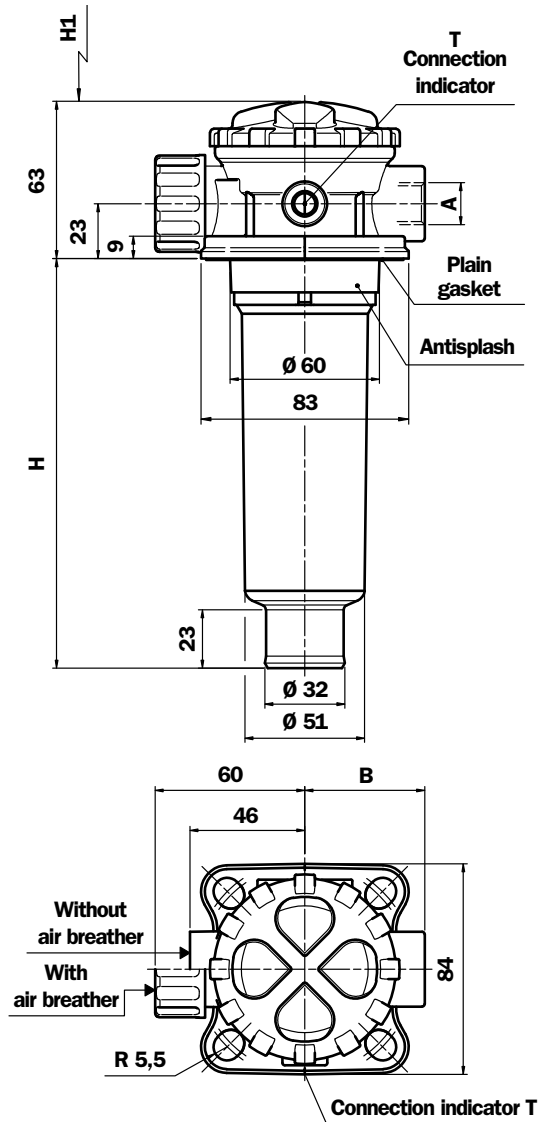
### Holes on the tank



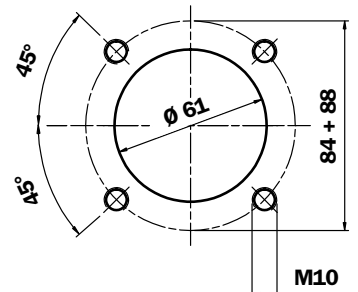
### MPT 020/021/024

Filter Length	H mm	H1 mm
1	103	115
2	167	180
3	206	210

## MPT 024 With or Without air breather



### Holes on the tank



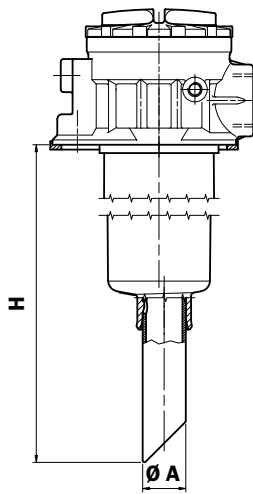
### Thread connections MPT 020/021/024

St.	A	B	T*
G1	G 3/8"	48	G 1/8"
G2	G 1/2"	48	G 1/8"
G3	G 3/4"	56	G 1/8"
G4	3/8" NPT	48	1/8" NPT
G5	1/2" NPT	48	1/8" NPT
G6	3/4" NPT	56	1/8" NPT
G7	SAE 6 - 9/16" - 18 UNF	48	1/8" NPT
G8	SAE 8 - 3/4" - 16 UNF	48	1/8" NPT
G9	SAE 12 - 1 1/16" - 12 UN	56	1/8" NPT

# Accessories

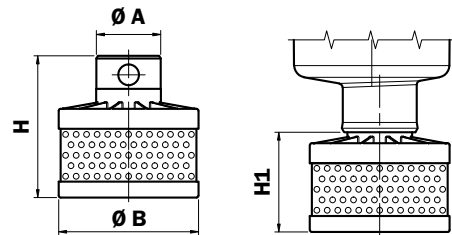
## "H" Dimension

Filter assembled with standard Nylon extension tube



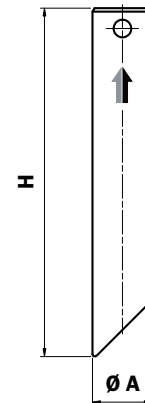
Tube extension Code	MPT....P01	Filter Length	H	Ø A
TE25A200		1	282	25
		2	346	
		3	385	
TE25A250		1	332	25
		2	396	
		3	435	
TE25A300	020	1	382	25
		2	446	
		3	485	
TE25A350	021	1	432	25
		2	496	
		3	535	
TE25A400	024	1	482	25
		2	546	
		3	585	
TE32A450		1	532	32
		2	596	
		3	635	
TE32A500		1	582	32
		2	646	
		3	685	
TE32A200		1	277	32
		2	324	
		3	374	
TE32A250	100	1	327	32
		2	374	
TE32A300		1	377	32
		2	424	
TE32A350	101	1	427	32
		2	474	
TE32A400	104	1	477	32
		2	524	
TE32A450		1	527	32
		2	574	
TE32A500		1	577	32
		2	624	
TE40A200		3	402	40
		4	504	
TE40A250		3	452	40
		4	554	
TE40A300	100	3	502	40
		4	604	
TE40A350	101	3	552	40
		4	654	
TE40A400	104	3	602	40
		4	704	
TE40A450		3	652	40
		4	754	
TE40A500		3	702	40
		4	804	

## Diffuser with fast lock connection



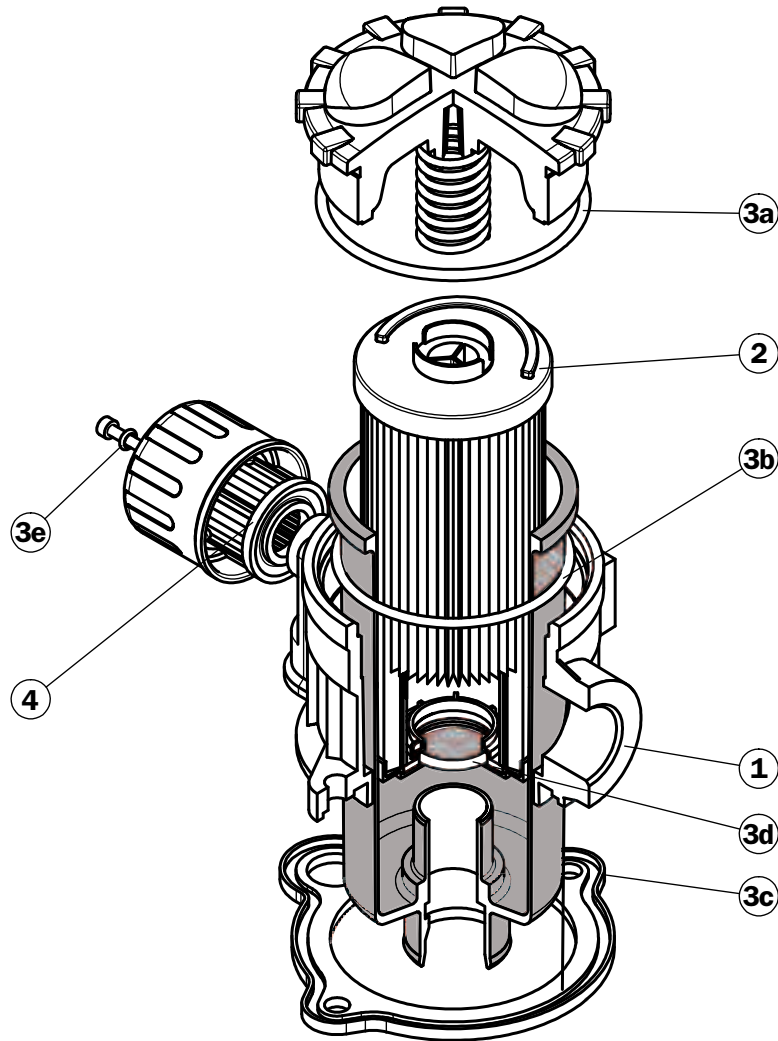
Code	Ø A	Ø B	H	H1	Size MPT (Option P01)	Length
DFS32A075	32	70	75	50	100 - 101 104	1 - 2
DFS40A075	40	70	75	50	100 - 101 104	3 - 4

## Standard Nylon extension tube Supplied not fitted



Code	H	Ø A	Size MPT (Option P01)	Filter Length
TE25A200	200	25	020 - 021 - 024	1 - 2 - 3
TE25A250	250			
TE25A300	300			
TE25A350	350			
TE25A400	400			
TE25A450	450			
TE25A500	500			
TE32A200	200			
TE32A250	250			
TE32A300	300			
TE32A350	350	32	100 - 101 104	1 - 2
TE32A400	400			
TE32A450	450			
TE32A500	500			
TE40A200	200	40	100 - 101 104	3 - 4
TE40A250	250			
TE40A300	300			
TE40A350	350			
TE40A400	400			
TE40A450	450			
TE40A500	500			

# Spare parts



Pos.	Description	Qty	FILTER Series					
			MPT 020/021		MPT 100 C/M		MPT 101	
<b>1</b>	Filter assembly	1	See order table					
<b>2</b>	Filter element	1	See order table					
<b>3</b>	Seal Kit	1	NBR 02050451	FPM 02050452	NBR 02050463	FPM 02050464	NBR 02050290	FPM 02050291
<b>3a</b>	Seal cover	1	O-R Metric Ø 59 x 3		O-R Metric Ø 90 x 4		O-R Metric Ø 90 x 4	
<b>3b</b>	Seal bowl	1	O-R 3200 Ø 50,47 x 2,62		O-R 4312 Ø 78,97 x 3,53		O-R 4312 Ø 78,97 x 3,53	
<b>3c</b>	Seal head	1	01026550	01026558	01026551	01026559	01026331	01026333
<b>3d</b>	Seal filter element	1	Length 1-2	O-R 4087 Ø 21,82 x 3,53	Length 1-2	O-R 4112 Ø 28,17 x 3,53	Length 1-2	O-R 4112 Ø 28,17 x 3,53
			Length 3	O-R 3081 Ø 20,24 x 2,62	Length 3-4	O-R 4162 Ø 40,86 x 3,53	Length 3-4	O-R 4162 Ø 40,86 x 3,53
<b>3e</b>	Air breather seal	1	O-R 2012 Ø 2,90 x 1,78		-		-	
<b>4</b>	Air breather filter element	1	10 micron A05L03	40 micron 01157617	10 micron A5L03	40 micron A5L40	10 micron A5L03	40 micron A5L40

# Ordering information MPT

## Filter assembly MPT

	<b>1</b>	<b>2</b>	<b>3</b>	<b>4</b>	<b>5</b>	<b>6</b>	<b>9</b>	<b>10</b>
	<input type="checkbox"/>	<input type="checkbox"/>	<input type="checkbox"/>	<input type="checkbox"/>	<input type="checkbox"/>	<input type="checkbox"/>	<input type="checkbox"/>	<input type="checkbox"/>
<b>Example 1: MPT</b>	<b>100</b>	<b>2</b>	<b>C</b>	<b>A</b>	<b>G3</b>	<b>A06</b>	<b>B</b>	<b>P01</b>
<b>Example 2: MPT</b>	<b>024</b>	<b>1</b>	<b>S</b>	<b>A</b>	<b>G1</b>	<b>M60</b>	<b>E</b>	<b>P01</b>

## Filter element MF

	<b>1</b>	<b>2</b>	<b>6</b>	<b>7</b>	<b>8</b>	<b>9</b>	<b>10</b>
	<input type="checkbox"/>	<input type="checkbox"/>	<input type="checkbox"/>	<input type="checkbox"/>	<input type="checkbox"/>	<input type="checkbox"/>	<input type="checkbox"/>
<b>Example 1: MF</b>	<b>100</b>	<b>2</b>	<b>A06</b>	<b>H</b>	<b>B</b>		<b>P01</b>
<b>Example 2: MF</b>	<b>020</b>	<b>1</b>	<b>M60</b>	<b>N</b>	<b>B</b>	<b>E</b>	<b>P01</b>

### 1 - Style

<b>Filter</b>	<b>Filter element</b>
<b>020</b> <b>021</b> <b>024</b>	<b>020</b>
<b>100</b> <b>101</b> <b>104</b>	<b>100</b>

### 2 - Filter length

<b>020</b> <b>021</b> <b>024</b>	<b>1</b> <b>2</b> <b>3</b>
<b>100</b> <b>101</b> <b>104</b>	<b>1</b> <b>2</b> <b>3</b> <b>4</b>

### 3 - Air breather

<b>S</b>	Without air breather
<b>C</b>	With air breather 10 $\mu$
<b>M</b>	With air breather 40 $\mu$

### 4 - Filter seals & Treatment

<b>A</b>	NBR
<b>V</b>	FPM
<b>W</b>	NBR, Head anodized - filter element compatible with fluid FHA, FHB, FHC (only for filter element type Axx and Mxx)
<b>Z</b>	FPM, Head anodized - filter element compatible with fluid FHA, FHB, FHC (only for filter element type Axx and Mxx)

### 5 - Connections

Type	MPT 020/021/024	MPT 100/101/104
<b>G1</b>	<b>G 3/8"</b>	<b>G 3/4"</b>
<b>G2</b>	<b>G 1/2"</b>	<b>G 1"</b>
<b>G3</b>	<b>G 3/4"</b>	<b>G 1 1/4"</b>
<b>G4</b>	<b>3/8" NPT</b>	<b>3/4" NPT</b>
<b>G5</b>	<b>1/2" NPT</b>	<b>1" NPT</b>
<b>G6</b>	<b>3/4" NPT</b>	<b>1 1/4" NPT</b>
<b>G7</b>	<b>SAE 6 - 9/16" - 18 UNF</b>	<b>SAE 12 - 1 1/16" - 12 UN</b>
<b>G8</b>	<b>SAE 8 - 3/4" - 16 UNF</b>	<b>SAE 16 - 1 5/16" - 12 UN</b>
<b>G9</b>	<b>SAE 12 - 1 1/16" - 12 UN</b>	<b>SAE 20 - 1 5/8" - 12 UN</b>

### 6 - Filter element

<b>A03</b>	Inorganic microfibre 3 $\mu$	Absolute filtration Inorganic Microfibre $\beta_x(c) \geq 1000$
<b>A06</b>	Inorganic microfibre 6 $\mu$	
<b>A10</b>	Inorganic microfibre 10 $\mu$	
<b>A16</b>	Inorganic microfibre 16 $\mu$	
<b>A25</b>	Inorganic microfibre 25 $\mu$	
<b>M25</b>	Wire mesh	Nominal Filtration Metal mesh
<b>M60</b>	Wire mesh	
<b>M90</b>	Wire mesh	
<b>P10</b>	Resin - Impregnated paper	Nominal Filtration Cellulose
<b>P25</b>	Resin - Impregnated paper	

### 7 - $\Delta p$ filter element collapse pressure

<b>N</b>	$\Delta p$ 10 bar (only for filter element type Pxx and Mxx)
<b>H</b>	$\Delta p$ 10 bar (only for filter element type Axx)
<b>W</b>	$\Delta p$ 10 bar compatible with fluid FHA, FHB, FHC (only for filter element Axx and Mxx)

### 8 - Filter element

<b>B</b>	NBR
<b>V</b>	FPM

### 9 - Bypass valve

<b>B</b>	1.75 bar $\pm$ 10%
<b>E</b>	3 bar $\pm$ 10%

### 10 - Option

<b>P01</b>	MP Filtri standard
<b>S01</b>	MP Filtri standard (only for MPT 100/101/104 S)

**MP Filtri** - The filter functions as described in this bulletin are valid exclusively for original MP Filtri filter elements and replacement parts. All rights reserved

The data in this publication are purely guideline. MP Filtri reserves the right to make changes to the models described herein at any time it deems fit in relation to technical or commercial requirements. The colours of the products shown on the cover are purely guideline. Copyright. All rights reserved.