



In line stainless steel piston check valves

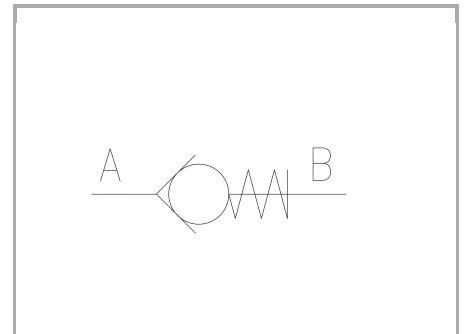
FT 2257/6

In line check valves available from 1/8" to 2" bsp. Max. working pressure 400/320 Bar, oil flow rate up to 850 Lt./min. (depending on the size). On request NTP THREADS can be supplied

In line

Direct control

Stainless Steel AISI 316



Technical information

Technical description

They are inserted in branches of the circuit where the free flow in one direction is allowed and the return flow in the opposite direction is not possible. A lasting and hermetic seal is ensured by the taper valve poppet, which is a reliable mechanical solution. The spring in high-resistance material is housed in such a way that it does not close as a pack during the opening phase. The external configuration of the body makes it easy to seize the piece during the assembling. They are available with different cracking pressure (0,5 standard and 2-4-6-8-10 bars).

Materials

CORPO VALVOLA / BODY VALVE	Acciaio INOX / Stainless Steel AISI 316
VALVOLA DI RITEGNO / CHECK VALVE	Acciaio INOX / Stainless Steel AISI 630
MOLLA / SPRING	Acciaio INOX / Stainless Steel AISI 316
FONDELLO FILETTATO / THREADED LOCKING RING	Acciaio INOX / Stainless Steel AISI 316

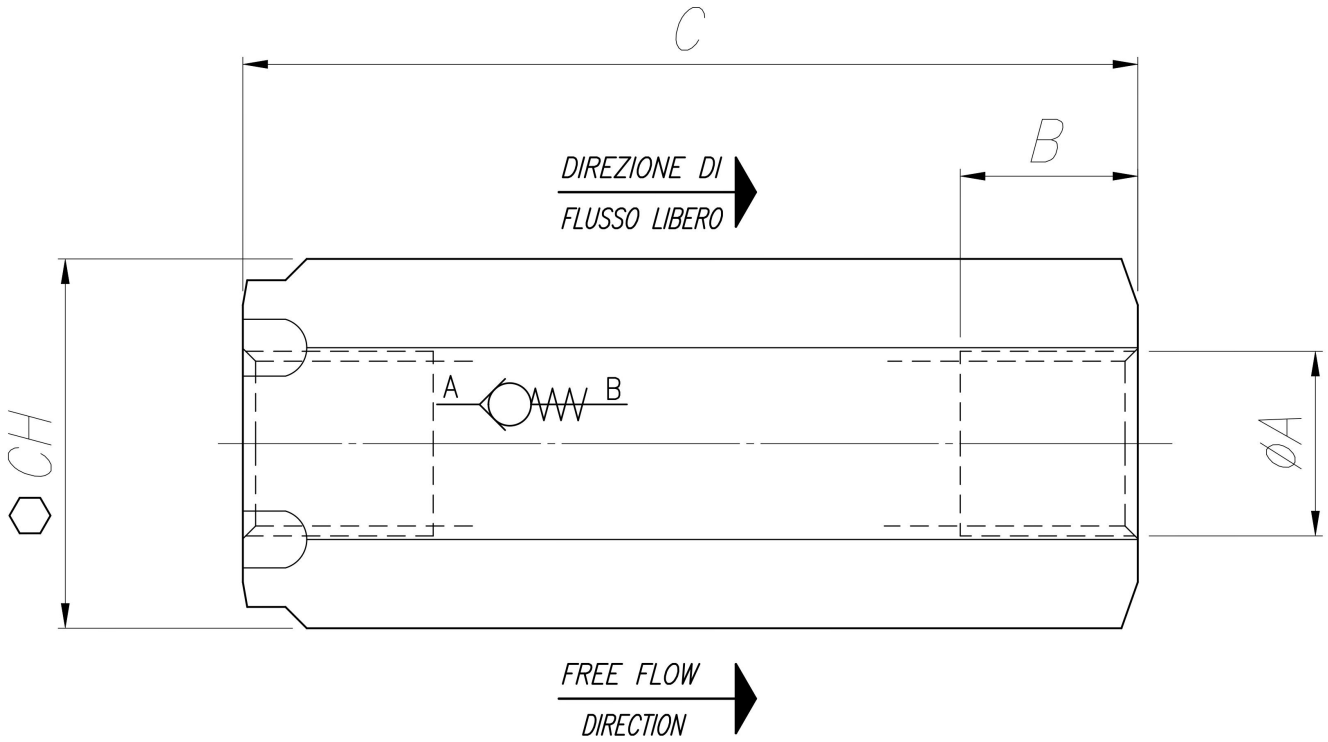


Technical data

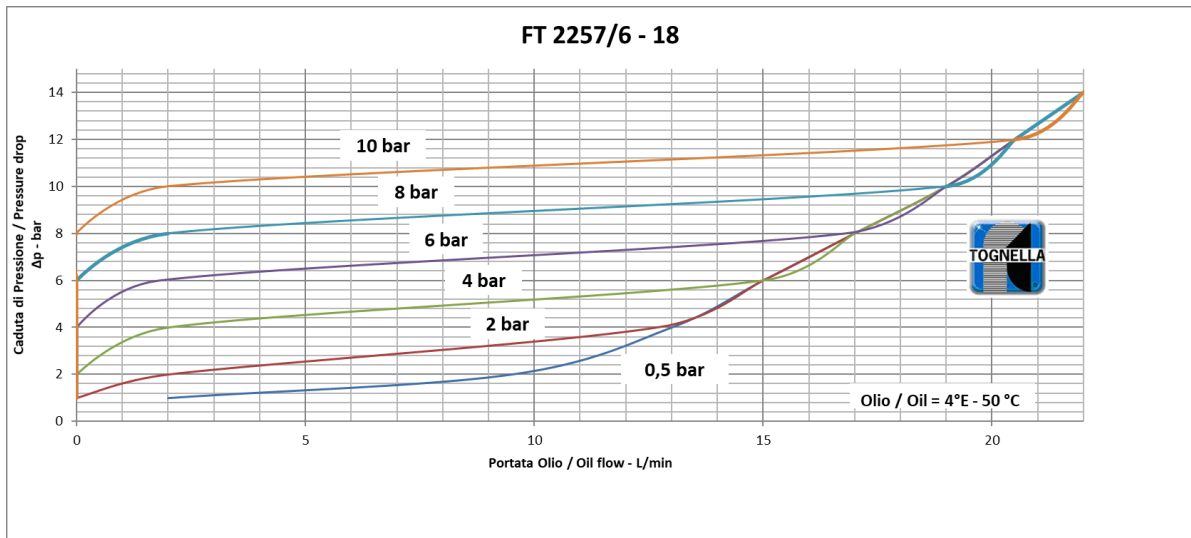
TIPO / TYPE	PRESSIONE ESERCIZIO BAR / WORKING PRESSURE BAR	MIN. PRESSIONE SCOPPIO BAR / MIN. BURSTING PRESSURE BAR	TEMPERATURA ESERCIZIO / WORKING TEMPERATURE	GRADO DI FILTRAZIONE μm / FILTRATION GRADE μm
18	400	1600	-20°C/+130°C	25
14	400	1600	-20°C/+130°C	25
38	400	1600	-20°C/+130°C	25
12	400	1600	-20°C/+130°C	25
34	400	1600	-20°C/+130°C	25
100	320	1300	-20°C/+130°C	25
114	320	1300	-20°C/+130°C	25
112	320	1300	-20°C/+130°C	25
200	320	1300	-20°C/+130°C	25

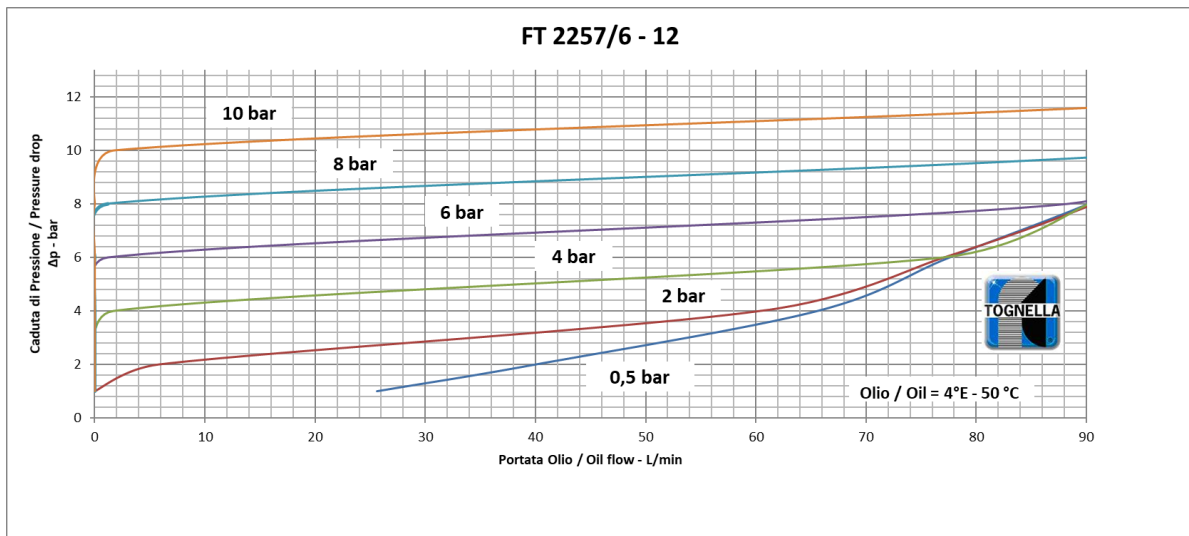
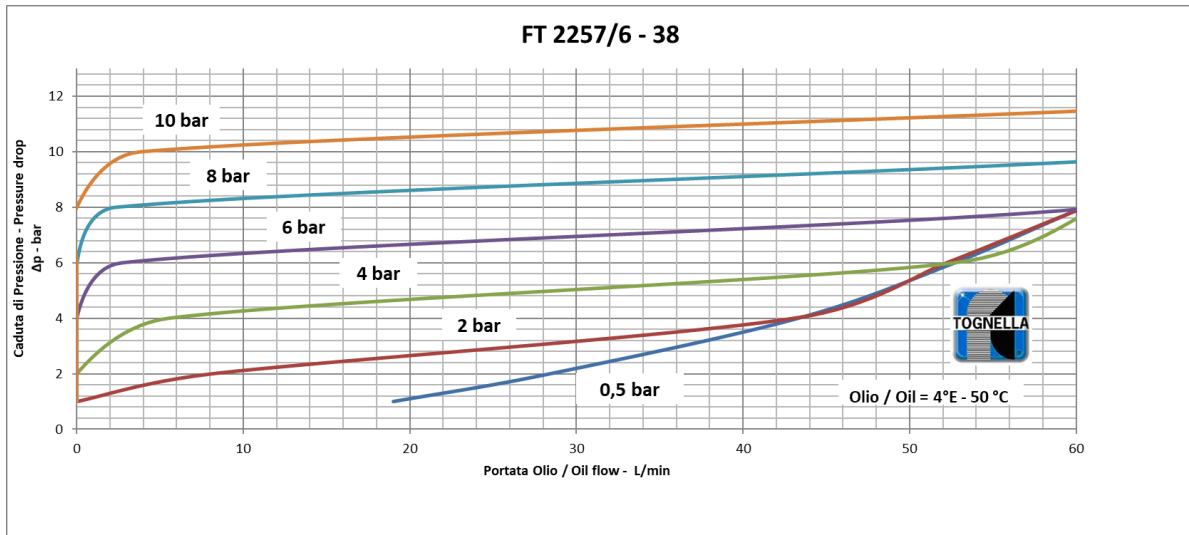
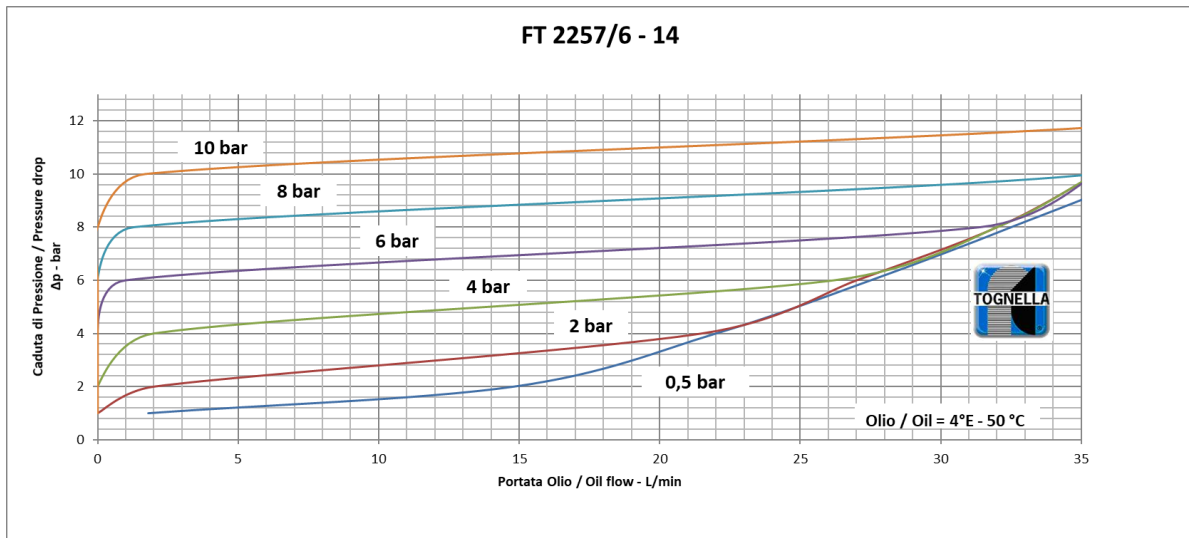
Dimensional tables and drawings

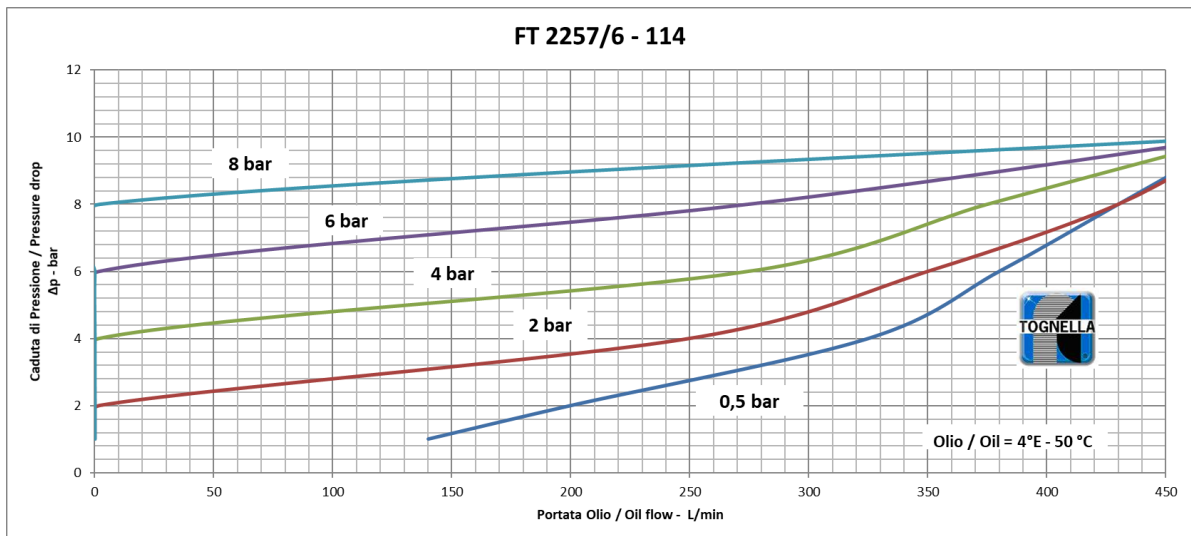
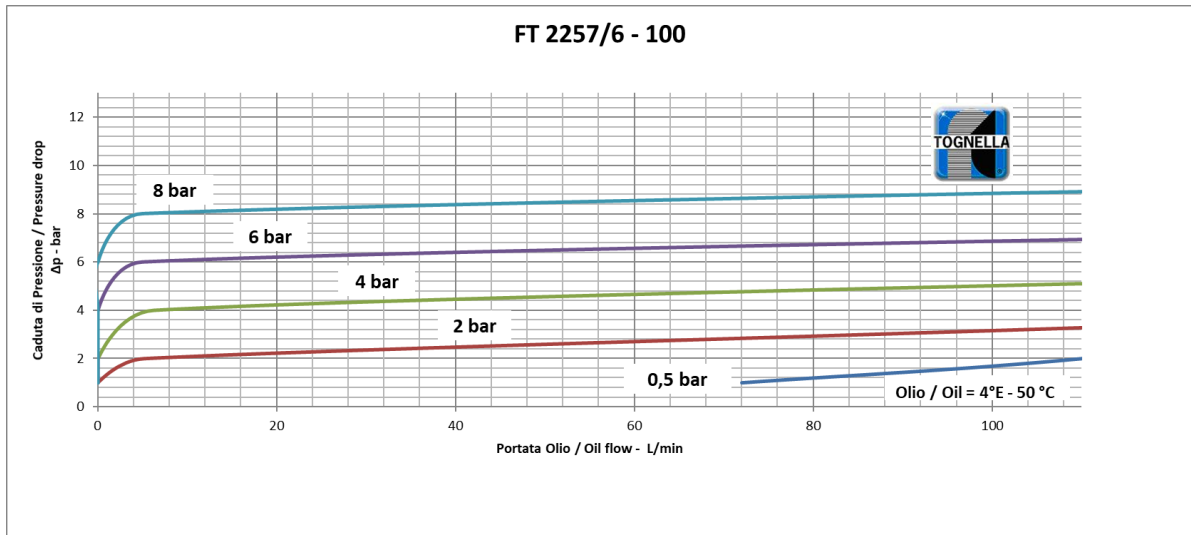
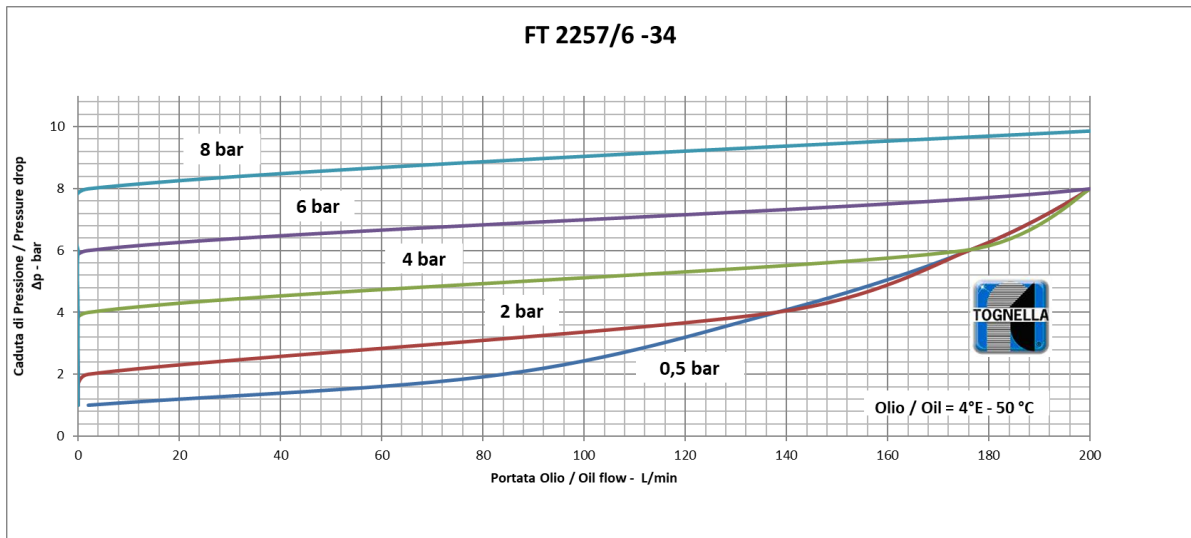
TIPO / TYPE	A UNI 338	B	C	CH	PESO / WEIGHT KG
18	1/8" G	9	46	17	0,075
14	1/4" G	13	63	22	0,165
38	3/8" G	13	68	27	0,260
12	1/2" G	16	81	32	0,415
34	3/4" G	17	100	36	0,605
100	1" G	20	117	46	1,170
114	1 1/4" G	22	135	55	1,850
112	1 1/2" G	24	159	65	3,130
200	2" G	27	198	75	4,900



Flow rate curves

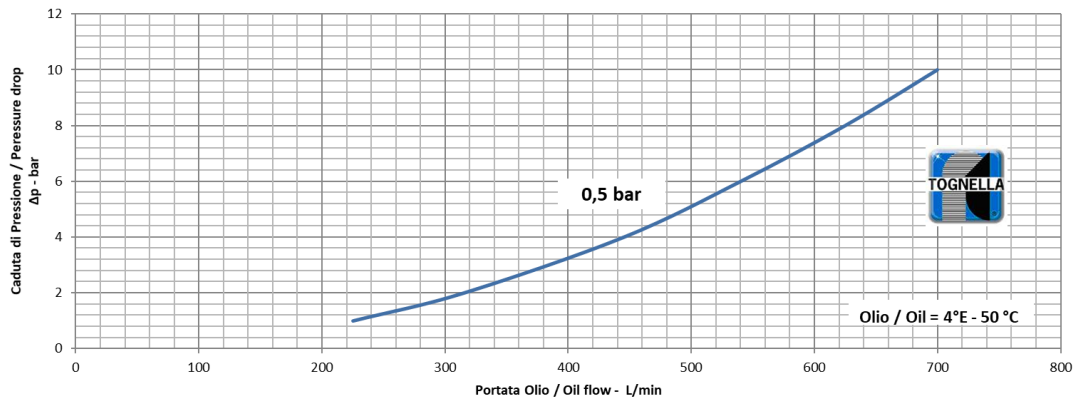








FT 2257/6 - 112



FT 2257/6 - 200

