



## In line carbon steel piston check valves

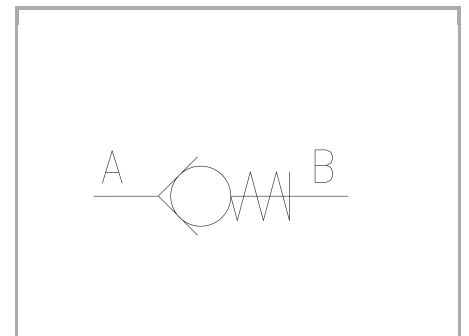
### FT 260/6

In line check valves available from 1/8" to 1" bsp, Max.working pressure 400/320 Bar, oil flow rate up to 160 Lt./min. (depending on the size)

**In line**

**Direct control**

**Carbon steel**



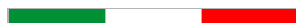
## Technical information

### Technical description

They are inserted in branches of the circuit where the free flow in one direction is allowed and the return flow in the opposite direction is not possible. In line single-acting valves are of ball type with alignment guide made of composite high resistance material which allows a total passage and an excellent resistance to the use and the breaking strength, confirmed by numerous tough tests. They are available with two different cracking pressure (0,35 standard e 4.5 bar).

### Materials

<b>CORPO VALVOLA / BODY VALVE</b>	<b>Acciaio/Steel 11 S Mn Pb 37-UNI EN 10087</b>
<b>MOLLA / SPRING</b>	<b>Acciaio/Steel AISI 302</b>
<b>SFERA / BALL</b>	<b>UNI 100 C6 - EN ISO 683-17</b>
<b>GUIDA SFERA / BALL GUIDE</b>	<b>Nylon 66 + Fibra carbonio</b>

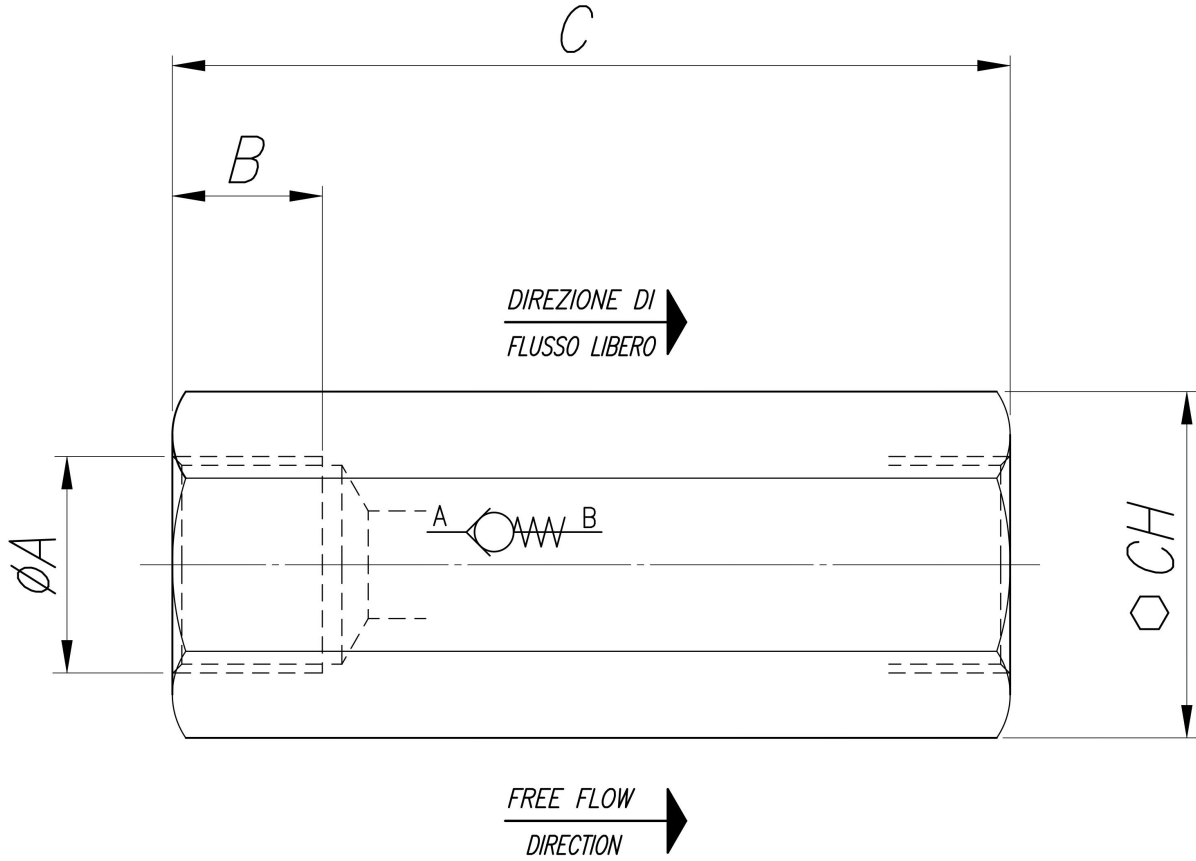


## Technical data

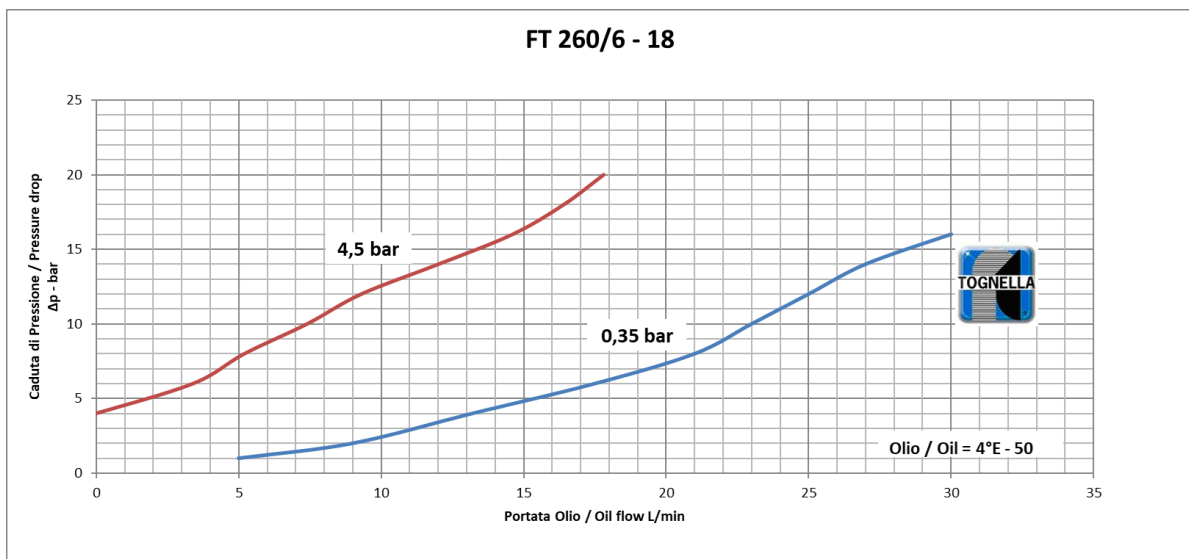
TIPO / TYPE	PRESSIONE ESERCIZIO BAR / WORKING PRESSURE BAR	MIN. PRESSIONE SCOPPIO BAR / MIN. BURSTING PRESSURE BAR	TEMPERATURA ESERCIZIO / WORKING TEMPERATURE	GRADO DI FILTRAZIONE $\mu\text{m}$ / FILTRATION GRADE $\mu\text{m}$
18	400	1600	-20°C/+100°C	25
14	400	1600	-20°C/+100°C	25
38	400	1600	-20°C/+100°C	25
12	400	1600	-20°C/+100°C	25
34	400	1600	-20°C/+100°C	25
100	320	1300	-20°C/+100°C	25

## Dimensional tables and drawings

TIPO / TYPE	A UNI 338	B	C	CH	PESO / WEIGHT KG
18	1/8" G	8,5	41	16	0,054
14	1/4" G	12,5	54	19	0,089
38	3/8" G	13	65	24	0,175
12	1/2" G	16	77	30	0,310
34	3/4" G	20	88	36	0,450
100	1" G	23	108,5	46	0,965

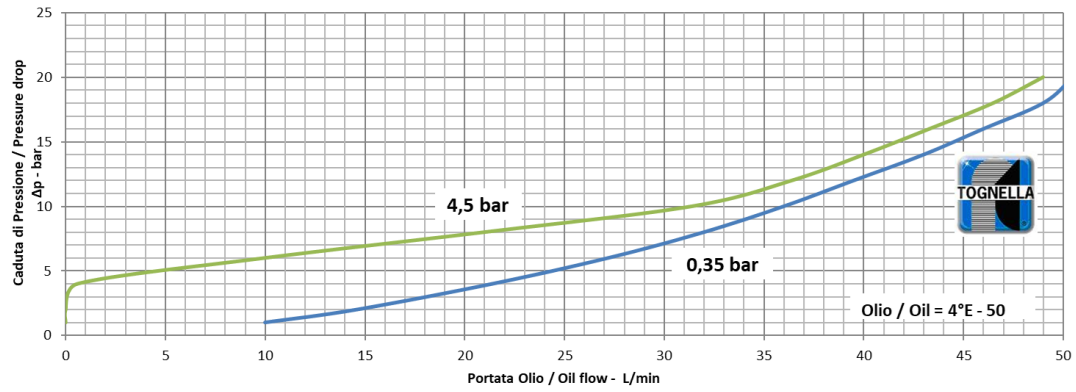


## Flow rate curves

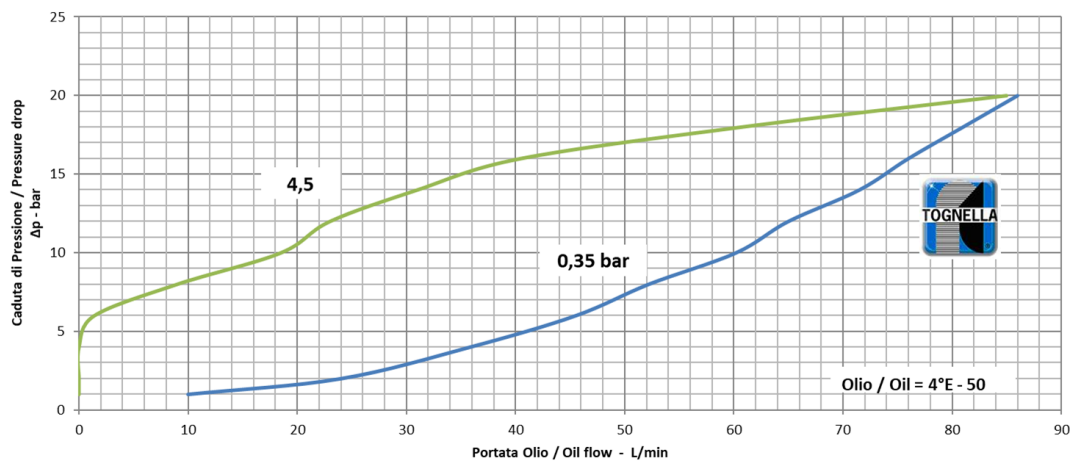




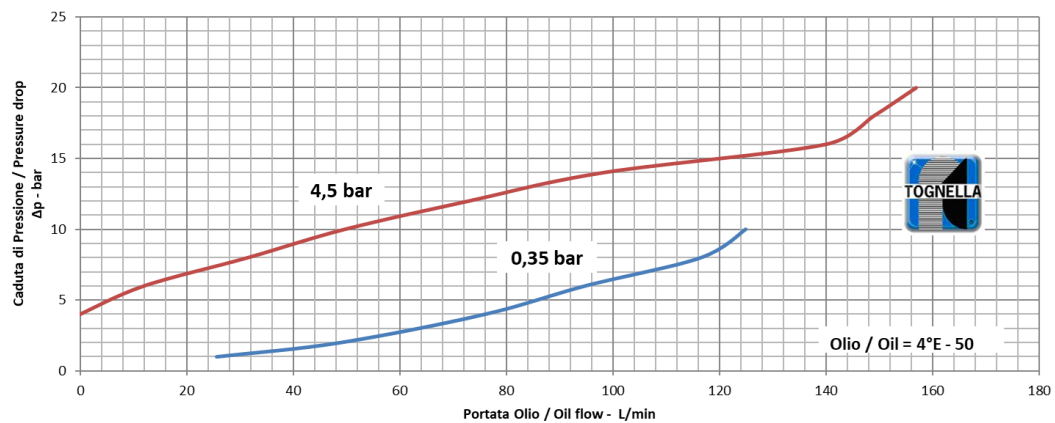
FT 260/6 - 14



FT 260/6 - 38

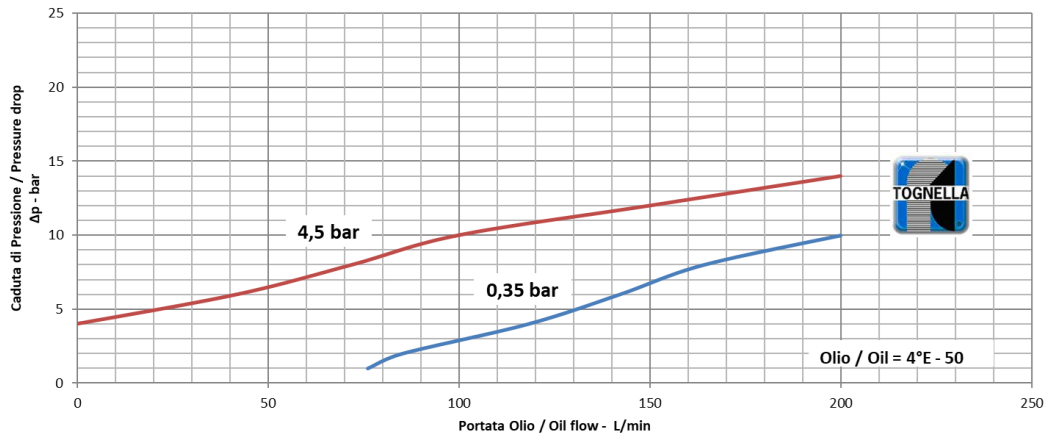


FT 260/6 12





### FT 260/6 - 34



### FT 260/6 - 100

